

AGENDA
JEFFERSON COUNTY PARKS COMMITTEE
Jefferson County Courthouse
311 South Center Avenue, Rm 202
Jefferson WI 53549
July 6, 2015 @ 9:30 a.m.

Committee: Augie Tietz – Chairman, Mike Kelly – Vice Chair, Matt Foelker – Secretary, Walt Christensen,
Laura Payne

1. Call to Order
2. Roll Call
3. Certification of Compliance with the Open Meetings Law
4. Review of the Agenda
5. Public Comment (members of the Public who wish to address the Committee on specific agenda items must register their request at this time)
6. Approval of the May 29, 2015 and June 8, 2015 Meeting Minutes
7. Communications
 - a. Thank You from Austin Messerschmidt
 - b. Mountain Bike Park Plan Eyed – Daily Jefferson County Union
 - c. Email from Jennifer Hamann regarding Jefferson County Dog Park
 - d. Natural Resources Summer School Class Fishing @ Rock River Park
 - e. Clearing a Watertrail – Friends of Glacial Heritage Area – Daily Jefferson County Union – Jefferson County LIVING
 - f. Husky Huddle Malamute Mingle – Daily Jefferson County Union
 - g. Shelter reservations June 12 – June 14
 - h. Shelter reservations June 23 – June 30
 - i. Understanding Dog Body Language – Daily Jefferson County Union – Jefferson County LIVING
 - j. Email from Clare Carlson – Coming Events of GHA
 - k. Letter and donation from Kathleen Gallagher
 - l. “Picnics are One of The More Popular Activities in the Parks. It has Always Been That Way” Joe Nehmer – Dine in Dine Out
 - m. Surveying Koshkonong Area’s Sacred Grounds – The Edgerton Reporter
 - n. Four on the Floor Workshop at Dog Park – Daily Jefferson County Union
 - o. Ride the River – Jefferson County Living
 - p. Paddle Down the Bark River July 11 – Daily Jefferson County Union
 - q. Fun Family Float – Daily Jefferson County Union
 - r. Camp Close to Home This Summer – Jefferson County Living
 - s. Campsites Available at Dorothy Carnes Park
8. Discussion and Possible Action on 2016 Park Fees
 - a. Dog Park Tag Fees
 - b. Park Shelter Rental Fees
9. Discussion and Possible Action on Holzhueter Park Implementation Plan
10. Update on WI DNR Grant Payment Request for Jefferson County Snowmobile Trail Maintenance 2014-2015
11. Update on Proposal(s) for Mountain Biking at Human Services
12. Update on Watertown Outboarders Property
13. Update on Glacial Heritage Area (GHA) Project – Greg Matthews
14. Update on Fundraising for Interurban Trail
15. Update on 2015 Parks Department Budget (May)
16. Set next meeting date August 3, 2015 @ 9:30am and possible agenda items.
17. Adjourn

The Committee may discuss and/or take action on any item specifically listed on the agenda. Individuals requiring special accommodations for attendance at the meeting should contact the County Administrator at 920-674-7101, 24 hours prior to the meeting, so appropriate arrangements can be made.

MINUTES
JEFFERSON COUNTY PARKS COMMITTEE
Jefferson County Courthouse
311 South Center Avenue, Rm 202
Jefferson WI 53549
May 29, 2015 @ 9:00 a.m.

Committee: Augie Tietz, Chairman; Mike Kelly, Vice Chair; Matt Foelker, Secretary; Walt Christensen, Laura Payne

1. **Call to Order**

Tietz called the meeting to order at 9:05am

2. **Roll Call**

Present: Tietz, Matt Foelker, Walt Christensen, Laura Payne

Absent: Mike Kelly

Others Present: Kevin Wiesmann, Joe Nehmer, Mary Nimm, Blair Ward Corporation Counsel for Jefferson County; Yelena Zarwell, Assistant Corporation Counsel for Jefferson County

3. **Certification of Compliance with the Open Meetings Law**

Meeting posted as required.

4. **Review of the Agenda**

Agenda approved as written.

5. **Public Comment (members of the Public who wish to address the Committee on specific agenda items must register their request at this time)**

No public comment.

6. **Parks Tour – estimated time of arrival**

The Parks Committee visited each of the following parks:

9:10 a.m.: Human Services Mountain Biking Project and Glacial River Trail Connector, Jefferson

Nehmer noted there is a separated grade connection to the Glacial River Trail and the GRT extends from Rock County through Jefferson County to the north. It was also noted that parking will be available at the new highway facility with connections to the GRT and the proposed mountain biking project and trail system on the Human Services property.

Christensen questioned plantings in the parking area at the Highway Department around the parking area for the GRT.

9:20 a.m.: Crawfish River Park, Jefferson

Nehmer indicated that the department took title in January, 2014 with funds donated by Friends of Jefferson County Parks for the purchase. A draft plan for property will be brought to the committee in early summer. The plan will include two remote camping sites, hiking trails, fishing areas, canoe/kayak put-in/take-outs and a possible parking area.

Wiesmann noted that the area is known as wetland. The department has met with Ducks Unlimited and with WisDOT for restoration planning of the wet area.

9:50 a.m.: Jefferson County Dog Park

Nehmer stated that the park is 109 acres. It was a former solid waste site acquired in 1976. Pre-engineering studies indicated only 6-8 acres would work as solid waste site. In 2003 property was converted and the original area opened as a dog park with expansions to follow. This park is ranked #1 in Wisconsin and 34th in the country. This is a regional facility and there are in excess of 1,800 annual permits. The 1000hr dog park attendant helps to monitor and screen park activities. Christensen questioned maintenance needs of park.

10:10 a.m.: Rock River Park, Johnson Creek

Nehmer noted the park is a former dump site.

Wiesmann noted that the park includes a shoreline restoration project. The park will require continued maintenance per DNR project requirements.

10:25 a.m.: Water Trails Put-in Take-Out, Johnson Creek

Nehmer noted that the put-in/take-out is one of a part many and part of the Natural Watertrail system and part of the Glacial Heritage Area system.

10:40 a.m.: Rock River Access Cappie's Landing, Watertown

Nehmer noted that the property is the former Watertown Outboarders Site. Overnight camping, fishing and canoeing/kayaking are proposed as part of the plan.

11:05 a.m.: Hubbleton Bridge

Nehmer noted the bridge is parallel to Hwy 19 and was built with snowmobile funds, for approximately \$435,000. The bridge supports snowmobile trail system and is owned by Jefferson County.

11:30 a.m.: Garman Nature Preserve & Waterloo Trail Head Facility, Waterloo

Wiesmann noted the former mounds had been pillaged. With a management plan, the mounds have been restored and reshaped.

12:00-12:45: Lunch, Lake Mills

Lunch break at Sportsman Pub from 12:00-12:45.

12:55 p.m.: Rock Lake Park(s), Lake Mills

Nehmer noted the park is divided between the upper and lower levels. The lower level is separated from Rock Lake by a town road and a town boat launch. It was also noted that the large parking lot between the two portions of the park is often full on summer weekends.

1:20 p.m. Korth Park, Lake Mills

Nehmer noted that since it's installation in 2014, the playground has been very successful and is heavily used. The pavilion is the most rented in our Park System. The park has is 1300ft of shoreline on Rock Lake.

2:15 p.m.: Dorothy Carnes Park, Fort Atkinson

Nehmer noted that Carnes Park is the largest park in the system with 515 acres. Six different parcels have been acquired comprising the majority of land around Rose Lake.

2:45 p.m. Indian Mounds Park, Fort Atkinson

The park was given to Jeff Co by Mr. Highsmith in 1993. It contains 11 rare effigy mounds and remnants of a walking trail.

3:00 p.m.: Return to Jefferson County Court House & Adjourn

Christensen motioned to adjourn at 3:04pm. Foelker seconded. Motion passes 4/0.

Respectfully Submitted,

Mary S. Nimm, Program Assistant

MINUTES
JEFFERSON COUNTY PARKS COMMITTEE
Jefferson County Courthouse
311 South Center Avenue, Room 112
Jefferson WI 53549
June 8, 2015 @ 9:30 a.m.

Committee: Augie Tietz, Chairman; Mike Kelly, Vice Chair; Matt Foelker, Secretary; Walt Christensen, Laura Payne

1. Call to Order

Kelly called the meeting to order at 9:30am

2. Roll Call

Present: Foelker, Christensen, Kelly, Payne

Absent: Tietz

Others: Nehmer, Stanger, Wiesmann, Wehmeier, Watkins, Margaret Burlingham, Holly Hisel, Julie Engel, Amy Smith, Alexa Zoellner, Bob Bennet (Jefferson County Snowmobile Alliance)

3. Certification of Compliance with the Open Meetings Law

Meeting was posted in compliance with the Open Meetings Law

4. Review of the Agenda

Agenda approved as written

5. Public Comment (members of the Public who wish to address the Committee on specific agenda items must register their request at this time)

No Public Comment

6. Approval of the May 4, 2015 and May 29, 2015 Meeting Minutes

Christensen motioned/Foelker seconded to approve the May 4, 2015 minutes. 4/0 voice vote, motion passes.

May 29, 2015 Meeting Minutes will be revisited at the July 6, 2015 Parks Committee Meeting.

7. Communications

- a. The Bank of Lake Mills Donation for the Interurban Trail – Daily Jefferson County Union, Watertown Daily Times
- b. Rock Lake Improvement Association

8. Discussion and Possible Action on Notice of Noncompliance Nitrate Level at Carlin Weld County Park

Holly Hisel, Jefferson County Health Department discussed the high nitrate levels at Carlin Weld County Park. She noted there wasn't a lot of information regarding this well which has been in the parks system since the 1970's. A discussion of options and facts were noted to make a decision on the well.

- a. How deep is the well
- b. Consider replacing
- c. Reconstruction, retrofitting and digging the well deeper
- d. Closing up well

Mark Watkins, Land and Water Conservation Department noted there is a program for well abandonment with cost share dollars which would pay 70% of the abandonment.

Christensen motioned/Foelker seconded to continue posting and keep testing annually. 4/0 voice vote, motion passed.

9. Discussion and Possible Action on 2016 Park Fees

Nehmer discussed changing the shelter rental fee structure by rounding fees to the next \$5, making it easier for payment of Park Fees.

Christensen Motioned/Foelker seconded to round 2016 Park Shelter Fees to the nearest \$5 amount. 4/0 voice vote, motion passed.

10. **Discussion and Possible Action on Rotational Grazing Field at Dorothy Carnes Park.**
Julie Engel proposed rotational grazing of cattle, sheep or goats on the 70 acres of leased cropland. She noted that grazing promotes plant growth and the manure fertilizes. Questions were asked regarding liability, need for electricity, how grazing will affect birdwatching and bird nesting, who will monitor the grazing, etc. Ms. Engel noted this would be an education tool for the public on rotational grazing. Ms. Engel will return to discuss more in-depth information.
11. **Discussion and Possible Action on Holzhueter Park Implementation Plan**
Margaret Burlingham presented a conceptual plan for the Holzhueter Park. Burlingham also presented a visual plan showing trails, prairies, parking and rest areas. The parking areas are situated in different areas to accommodate riders and walkers and site seeing. Burlingham noted one homeowner in the center of the project and the need to buffer the homeowner's property. Burlingham also noted that Trek's Mountain Biking Trail Planner has stated this could be a premiere mountain biking facility in the southern part of the state. The mountain biking trail would be about 5-6 miles in length.
The committee commented they are satisfied with the direction the plan is going.
Greg Matthews will set up a meeting with DNR and will report back to the committee.
12. **Discussion and Possible Action on letter received regarding Watertown Outboarders Property.**
Nehmer discussed the letter of concern received from Mr. & Mrs. Halvorson. The letter stated their concerns about overnight camping, trespassing and excess garbage on their property.
Matthews noted the implementation plan needs to be approved by the Division Administrator for Land from the DNR. It does not have to go before the Natural Resources Board. The Natural Resources Board's policy is not to name properties after donors, but an exception should be made for this particular property. Matthews will work on the naming.
13. **Discussion and Possible Action on Rain Check Policy for Camping at Dorothy Carnes**
No changes.
14. **Update on State Budget and Stewardship.**
Nehmer discussed the State Budget and noted it appears dollars have been put back into the budget for the Department to have acquisition authority in Wisconsin, however, it will be a little bit less available.
15. **Update on Glacial Heritage Area (GHA) Project – Greg Mathews.**
Matthews stated he reported on the naming of Watertown Outboarders Property in Item 12.
16. **Update on Fundraising for Interurban Trail**
Nehmer reported we are starting to talk to the service clubs, most notably here in Jefferson to see if they are interested in joining us. Notification of Stewardship dollars is pending with the hope that an award will generate additional local contributions. Nehmer has contacted Supervisor Rinard for the Ixonia area. Watertown and Oconomowoc Rotary's are writing a shared grant.
17. **Update on 2015 Parks Department Budget**
Nehmer reported expenditures to date are a little over 24%, the budget is on track. The capital items have been purchased. Mr. Wehmeier has approved replacing the deck at Dorothy Carnes Park.
18. **Set next meeting date July 6, 2015 @ 9:30am and possible agenda items.**
Meeting set.
19. **Adjourn**
Motion to adjourn at 11:20am by Christensen motioned/Foelker seconded, passed 4/0, motion passed.

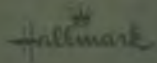


THANKS SO MUCH

From Austin
Messerschmidt



For all that you did to
help with my Eagle
Project.



Kevin

Thank you for being my mentor
throughout this whole project. It
was a lot of fun working with
you and building the playground.
I look forward to seeing you at
my eagle ceremony. (date not yet set)

-Austin

Please extend my thanks to JC, Harvey, and
Vern because I do not have their contact
information.

-Thanks

Mountain bike park plan eyed

By Amy Smith Union lifestyles editor | Posted: Tuesday, June 9, 2015 9:52 am

JEFFERSON — An initial implementation plan for Holzhueter Farm State Park was presented to the Jefferson County Parks Committee Monday.

The plan, which still is in the early stages of the design process, proposes about five to six miles of beginner, intermediate and advanced mountain biking trails, as well as parking, a picnic area and a centrally-located park trailhead.

Earlier this year, park planner Margaret Burlingham, of LanDesign by Margaret Burlingham LLC in Palmyra, met with a representative of Trek Bicycle of Waterloo who said that Holzhueter Park could be one of the premiere mountain biking parks in the southern part of the state due to its diverse landscape.

“There is no park that has topography like this except the Southern Kettle Moraine,” Burlingham said. “Being located so close between Milwaukee and Madison, it could be very heavily used.”

The 2.95-acre park, between Waterloo and Watertown, was purchased by the state for \$89,900 in 2012. At the time, the park was designated as a conservation park as part of the Glacial Heritage Area master plan.

The primary purpose of a conservation park is to provide opportunities for residents and visitors to engage in a range of outdoor activities. The county has chosen to implement mountain biking trails, as the sport has gained in popularity throughout the state.

Currently, a landowner resides in the center of the park, which has created some design challenges. A parking lot, with potential for larger overflow parking, is proposed for the southern end of the park, with direct access to Island Road. A road would lead from the parking lot to a trailhead to the west of the neighboring landowner.

The homeowner and trailhead would be separated by a forest, keeping the noise minimal. Because the park’s topography is so steep, a centrally located trailhead at the top of a drumlin would allow those who do not plan on mountain biking to enjoy the park.

The trailhead potentially would include a parking lot, restrooms, a shelter and a scenic overlook. A picnic area also is planned on the east side of the property in what Burlingham described as a savannah-like area, with tall and beautiful trees. The proposed rest area is, however, closer in proximity to the adjacent homeowner.

Jefferson County Supervisor Mike Kelly voiced approval of the proposal, noting the homeowner had purchased the property after the park already was established.

“They knew what they were getting into,” he added.

A public presentation of the park implementation plan will be held in the near future in an effort to gain further support and hear concerns for the project. The county’s next step will be to gain approval of the plan by the state Department of Natural Resources.

If approved, implementation of the park plan will take several years, as the mountain bike trails will be created by a mostly volunteer crew. County parks operations supervisor Kevin Wiesmann said he hopes to build about 1.5 miles of trail per year unless the county were to hire outside contractors.

Wiesmann added that he hopes to gain experience and a strong volunteer base when the mountain biking trails are implemented behind the Jefferson County Human Services building in the next few years.

Discussions also have begun with the Jefferson County Bicycle Club in effort to create a mountain biking branch and gain more interest for the sport, specifically within the county.

“We’re starting the dialogue, and I think a lot of people were interested,” Wiesmann said.

Burlingham added that once mountain bikers get out to the park and see the potential, the volunteer base might snowball further.

Wiesmann, who visited a mountain biking race in Dane County this past weekend, said he was amazed at the amount of bikers and bystanders at the event.

“Wisconsin is a big supporter of the sport,” he added. “It brings a lot into the local economy and a lot of people travel to view the races. There’s definitely a big demand for that and a lot of interest in it, and I think with this piece of property we can have a really special park that would have a huge draw.”

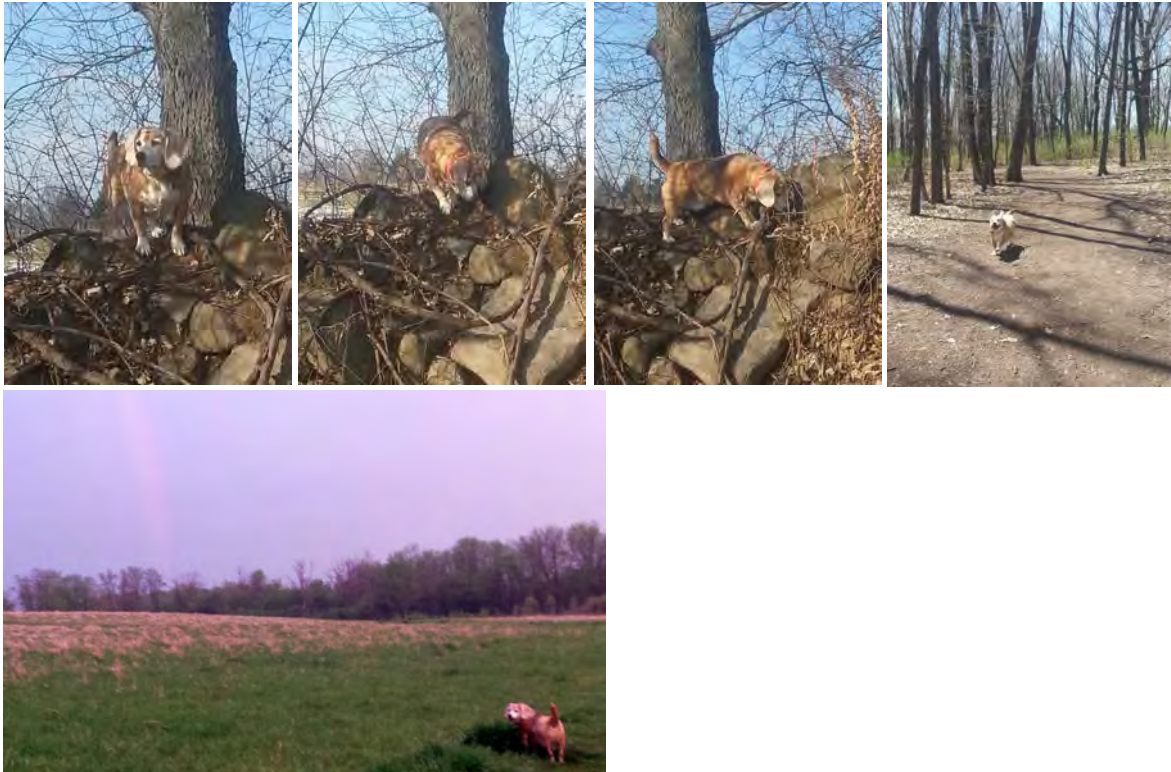
Also Wednesday, the council:

- Discussed a proposal to implement a rotational grazing field at Dorothy Carnes County Park.
- Discussed the possibility of implementing a raincheck policy for camping at Dorothy Carnes County Park.
- Addressed concerns in regard to the proposed riverside camping at the Watertown Outboarders property.

Fri 6/5/2015 8:36 AM

Jennifer Hamann sent in pictures of her dog Poncho and wrote this:

Jane and Members/Founders/Volunteers of the Jefferson City Dog Park. I wanted to thank you all again for all the work and dedication you all have to the parks. Poncho and I continue to go out on a weekly basis to escape the chaos of city life, and to realign ourselves with the freedom, comfort, and relaxation of nature. I have been able to watch him since this park opened, not only embrace the joy and freedom of not being constrained to a leash all the time; but also, learn how to play, sniff, and socialize with other dogs. With him now being 14 years old I am sadly watching him become more restricted in lifestyle, but the one thing that never fails to bring out the “joy of youth” and life itself, is when he can tell we are headed to the dog park and when we arrive! This is a true blessing and I thank you for that-not just for the dogs, but for the owners who cherish their happiness.



From: Lyndsay Scheibel
Sent: Monday, June 22, 2015 8:01 AM
To: JeffCoParks
Subject: Summer School Class

Good Morning,

I am teaching a summer school class on fish and wildlife at Johnson Creek Elementary School. We are planning two trips to Rock River Park to fish, the first on June 25 and the second on July 16. The class has a total of 32 kids in it. This is the first reason I am emailing to you today.

The second reason is to ask if there would be anyone from the Parks Department that would be interested in speaking to one or both of the classes about the department, the parks in the area, current initiatives, and opportunities for the students to get out and enjoy Jefferson County. I recently took the entire class to Dorothy Carnes Park on a hike and they loved it!

Please let me know if this is something that would be possible.

The first class starts at 8 and ends at 8:55 and the second starts at 9 and ends at 9:55. Monday - Wednesday (we do not have summer school next week due to the holiday)

Thank you,
Lyndsay Scheibbel

Lyndsay Scheibel
Fifth Grade Teacher
School District of Johnson Creek



Clearing a water trail on Koshkonong Creek

Sometimes nature needs a nudge to make for a more inviting adventure.

This month, The Friends of Glacial Heritage Area's Paddle Volunteer Corps, armed with chain saws and hand tools, took the plunge into the chilly waters of Koshkonong Creek to clear a paddling water trail between Cambridge and Rockdale. Working from paddle craft, the volunteers cut portions of fallen, dead trees

to make a path large enough for kayaks and canoe passage. They dragged the debris and safely stacked it along the creek bank. Despite the cold, wet conditions and the numerous blockages, the work was completed by midday.

A few days later, the

volunteer corps hosted a group paddle on this stretch of the creek, taking advantage of the recently-cleared water trail.

Volunteers included Bob Magnussen, Dennis Panczenko, Charlie Wedl, Greg Idzikowski, parks operations supervisor Kevin Wiesmann, construction and maintenance employee J.R. Klement, and Clare Carlson.

Anyone can join the Friend's Paddle Volunteer Corps to help clear water trails in the Glacial Heritage Area and to enjoy organized paddles throughout the region.

The next Corps project is the Bark River. Email friends ofgha@gmail.com or go to www.glacialheritagearea.org.



Submitted photos

Armed with chain saws, volunteers clear a paddling water trail on Koshkonong Creek.



Friends Paddle Volunteer Corps seeks help clearing water trails in the Glacial Heritage Area.



HUSKY HUDDLE MALAMUTE MINGLE — A H2M2 Husky Huddle Malamute Mingle is this Sunday, June 14, from 10 a.m. to 2 p.m., at the Jefferson County Dog Park in Johnson Creek. Members can meet at Area No. 2 in the Park for a fun day with their dogs. A fee of \$5 per dog can be paid at the park or a seasonal pass for \$25. No balls or dog treats will be allowed in the park area.

Date	Day of Week	Park Shelter	Other Notes	Time of Day	Event Type	Number of People
6/12/2015	Friday	Korth Lane			Graduation	100-200
6/13/2015	Saturday	Welcome Travelers		10:00-Close	Birthday	50
6/13/2015	Saturday	Dorothy Carnes		3:00 Close	Wedding	-100
6/13/2015	Saturday	Dorothy Carnes		2:00-2:30	Wedding Ceremony	20
6/13/2015	Saturday	Korth Lane		All day	Wedding	100
6/13/2015	Saturday	Upper Rock Lake		11:00-Close	Graduation	50
6/13/2015	Saturday	Lower Rock Lake			Graduation	100
6/14/2015	Sunday	Dog Park #1			Lure Coursing	
6/14/2015	Sunday	Husky Mingle #2			Husky Mingle	
6/14/2015	Sunday	Dorothy Carnes		10-5pm	Family Reunion	100
6/14/2015	Sunday	Korth Lane		Noon-Close	Graduation	100
6/14/2015	Sunday	Lower Rock Lk		11:30 - 3:00	Church Picnic	50
6/14/2015	Sunday	Carlin Weld		All Day	Family Picnic	30

Date	Day of Week	Park Shelter	Other Notes	Time of Day	Event Type	Number of People
6/23/2015	Tuesday	Carnes Campsite 2			Camping	
6/25/2015	Thursday	Rock River Park		8:00-8:55	Educational	32
6/26/2015	Friday	Dorothy Carnes - Camp Sites			Camping	
6/26/2015	Friday	Korth Lane			Wedding	
6/27/2015	Saturday	Korth Lane			Wedding	
6/27/2015	Saturday	Korth Elm Pt Rd		All Day	High School Reunion	50
6/27/2015	Saturday	Lower Rock Lake		Noon-8:00	Family Reunion	-100
6/27/2028	Sat.-Sun	Upper Rock Lake	Group Permit	27-28	ARES Races Ex	
6/27/2015	Saturday	Dorothy Carnes		11:00-5:00	Birthday	20
6/27/2015	Saturday	Welcome Travelers		3:00-7:00	Birthday	50+
6/27/2015	Saturday	Kanow Park		10:00-8:00	Bridal Shower	60
6/27/2015	Saturday	Cold Spring Creamery	Group Permit	All Day	Tour Da Goose Ride	200+
6/27/2015	Saturday	Glacial River Trail	Group Permit	All Day	Tour Da Goose Ride	200+
6/27/2015	Saturday	Rome Pond Park	Group Permit	All Day	Tour Da Goose Ride	200+
6/28/2015	Sunday	Dorothy Carnes		9-5pm	Graduation	-100
6/28/2015	Sunday	Korth Park - Korth Lane		All day	Bridal Shower	-100
6/28/2015	Sunday	Carlin Weld		All day	Graduation	-100
6/28/2015	Sunday	Lower Rock Lake Park		10:00 Close	Graduation	60
6/30/2015	Tuesday	Korth - Korth Lane		PM	Fund Raiser	50+

■ JUNE 20

Free Silver Sneaker Class: 9:30 a.m., Brook Gardens Place, 300 O'Neil Place, Lake Mills. Silver Sneaker is an exercise program for older adults to participate in physical activity that will help them to maintain greater control of their health. This is a great way to socialize and meet other people. Call Julie Schmocker at (920) 648-5760.

Fun Family Float: 9-10 a.m. registration, Highway B boat launch, west of Johnson Creek. Come and enjoy Saturday's sundae and ice cream float plus other refreshments and beverages. \$10. Canoe rental available. 5.5 miles Fun Family Float ends at the Jefferson Rotary Park, north of the dam. A return shuttle between the Highway B launch area and Rotary Park will be running until 1 p.m. (920) 674-4511 or (920) 674-9000.

Polka for the Pets: 6 to 9 p.m., 211 S. Water St., Fort Atkinson. Polka to the music of the Steve Meisner Band. Cost: \$5. Cash bar and hors d'oeuvres are available. All proceeds benefit the Humane Society of Jefferson County.

Understanding Dog Body Language: 10 a.m., Area 3, Jefferson County Dog Park, Highway 26. The Friends of the Jefferson County Dog Park invite dog lovers to learn what their dogs are thinking. The event is free, but for humans only. Contact Jane Stanger at (920) 674-7260 or janes@jeffersoncountywi.gov.

From: Clare Carlson [<mailto:friendsofgha@gmail.com>]

Sent: Monday, June 15, 2015 2:01 PM

To: Clare Carlson

Subject: In the GHA: Rose Lake Bird Walk, 2 Bark River Paddles, Aztalan Event

Hi everyone - hope you are enjoying the warmer temps; let's hope for some dryer weather, too. We've got some great GHA outdoors events coming up. Details are below. Please feel free to email me with any questions.

- *Bark River Paddle **tomorrow (June 16)** with Bob Magnussen (Friends of GHA)*
- *Bird Walk at Rose Lake WA (Dorothy Carnes EAST) **this Saturday (June 20)**, 9 AM (Friends of GHA co-host)*
- *Family Fun Float (Jefferson Rotary Club) **this Saturday (June 20)***
- *Family-Friendly Bark River Paddle **Saturday, July 11**, Burnt Village to Fort Atkinson, 9:30 AM (Friends of GHA, Reserve your 2Rivers boat asap)*
- *Solstice Celebration at Aztalan State Park, **Sunday, June 21**, 6:30 PM*

DETAILS:

*Bark River Paddle **tomorrow (June 16)** with Bob Magnussen*

Paddle from Pickett's Store in Rome, (#44 put in) to Hwy 106 by Hebron, (#46 take out). Please be unloaded & ready to shuttle by 10 am. This is about an eight mile paddle, and should take under three hours. Paddlers will stop for a lunch break along the way, so bring a sack lunch for the trip. All launch locations reference the GHA Watertrails Map (available on www.glacialheritagearea.org). Free event.

*Bird Walk at Rose Lake WA (Dorothy Carnes EAST) **this Saturday (June 20)**, 9 AM*

Join bird walk leader Brad Webb from Jefferson-Dodge Bird Walks and Friends of GHA on a bird walk at Rose Lake Wildlife Area East this Saturday starting at 9 AM. The walk will begin at the parking lot at the end of Jones Lane, just outside Fort Atkinson. This newer section provides great habitat for grassland and prairie birds, including Eastern Meadowlarks and Bobolinks - come on out and learn their songs! Bring your binoculars if you have them. Note: be aware that we are in high tick season, so long pants are a great idea. Visit the following page for a map and other details: <http://www.theropod.org/June15.html>. Free event.

*Jefferson Rotary Club's Family Fun Float, Jefferson, **Saturday, June 20***

Registration 9:00-10:00 am. Paddle the Rock River from Johnson Creek to the Rotary Waterfront Park in Jefferson. Starts at Hwy B boat launch just West of Johnson Creek. \$10/person. An Energy Bar and water available at sign-up to take on the journey, with sundaes, music and other attractions at take out. Canoe rental available, phone Chamber at 920-674-4511 or Steve Lewis at 920-674-9000. This is a great family event!

*Solstice Celebration at Aztalan State Park, **Sunday, June 21**, 6:30 PM*

Come out to Aztalan State Park and celebrate the formal beginning of summer on the evening of summer solstice, June 21, the longest day of the year. The Friends of Aztalan State Park will host the event beginning at 6:30 with snacks and beverages at the park shelter. The seasonal movements of the

sun were important in the religious beliefs of the ancient Mississippian people who built a large, fortified town here with large earthen platform mounds over 800 years ago. This year's program will feature a presentation by UW-Madison archaeology professor Dr. Sissel Schroeder and her staff on the results of archaeological excavations currently being conducted on a part of the site where houses had been previously identified ([see a great article about this work in WI State Journal](#)). Recently completed plans for a proposed new visitor center at the park will also be displayed. The evening will conclude with a viewing of the sunset (weather permitting) from the southwest platform mound at the site that probably supported a structure where the leader of the community lived. The program is free but a WI State Park sticker (either day or annual) is needed and can be purchased at the park. For more information contact Friends of Aztalan Executive Director Bob Birmingham at (608) 516-3421 or birmi@sbcglobal.net. Aztalan State Park is located on County Hwy. Q, one mile east of Lake Mills.

*Family-Friendly Bark River Paddle **Saturday, July 11, Burnt Village to Fort Atkinson, 9:30 AM***

The Friends of GHA is organizing this lovely paddle down the Bark River near Fort Atkinson, followed by lunch at Cafe Carpe (they are making us a special lunch, but folks can also order off the menu). Put in #48 at Burnt Village Park (County Hwy N) to take out #65, Fort Atkinson Public Launch (N. Water Street). The paddle is about 2-3 hours long, depending on water levels. Please be unloaded and ready to shuttle at 9:15. **Note: For those who would like to rent a boat from 2Rivers Bicycle & Outdoor in Fort (18 S Water St W), please contact 2Rivers directly ((920) 563-9391) as soon as possible to reserve a canoe or kayak - you will need to be at 2Rivers before 9:15 the morning of the shuttle to pick up equipment and to shuttle.** Free event.

Thanks everyone!

Clare L. Carlson
Board President
Friends of Glacial Heritage Area



*Supporting parks, trails, waters,
wildlife areas and recreation
in Greater Jefferson County.*

Join today!

Contact us
friendsofgha@gmail.com
glacialheritagearea.org

Facebook: Glacial Heritage Area

6-10-15

Thank you for mailing me the information I requested about the Glacial Heritage Area and the booklet about Jefferson Co. Parks.

I certainly enjoy getting to fish once in awhile at the Burnt Village Co. Park and would like to make a donation for its upkeep.

Sincerely,

Kathleen R. Gallagher



Campgrounds on the east end of Dorothy Carnes Park provide the ideal picnic location. ■ LYDIA STATZ PHOTO

served each Tuesday and Friday nights.

In addition, the diner features a full-spread salad bar, all-American breakfast and local meats. Monday is Senior Day from 11 a.m. to 8 p.m. and an accordion player makes a guest appearance on Friday evenings.

One of Fitz's largest events is its annual corn boil on the second Thursday in August. The event, which lands on Aug. 13 this year, is held in conjunction with the Lodi EMS and is a fundraiser for several different community groups. It features a DJ, silent auction, raffles and, of

course, fresh sweet corn.

"All proceeds go back to the community," Ryan noted.

Beverages, such as Bloody Marys and Mimosas, also are a big seller at Fitz's, which offers a large, fully stocked bar.

"We are a supper club with a twist," Ryan said. "We serve steak, seafood and sandwiches—definitely a variety. It's basic, but good."

Fitz's has been on the lake for more than 30 years, but originally operated as a small snack bar. Owners Howie and Asta Blanchar, along with Ryan and Josh Bartholomew, purchased

**"Picnics are
one of the
more popular
activities in the
parks. It has
always been
that way."**

JOSEPH NEHMER

Jefferson County Parks Director

the restaurant in the 2000s and undertook a remodel and expansion to offer more indoor and outdoor seating.

Sweeping views of Lake Wisconsin can be seen from both the outdoor and indoor seating.

"You can just sit on the deck and get a great, panoramic view of everything," Ryan added.

Heaters provide extra warmth on the outdoor deck seating on cooler spring and fall nights. For those warm, summer days, the deck is completely shaded, while picnic tables lining the dock offer direct sun. ¹⁹

And, if you're not in the mood

to dine in, Fitz's also offers carry outs, which have become extremely popular among boaters, Ryan said.

On a busy day, the co-owner said boats line the banks of the restaurant, waiting for a parking spot, so that they can enter and grab their meals to go.

Public lake access and a gas pump are other attractive features for many boaters.

"We advertise you can come by boat, car and bike," Ryan added.

For those outdoor diners looking for something more low-key, Jefferson County offers several parks and recreational areas that provide the perfect picnic spot.

Dorothy Carnes and Rose Lake State Natural Area, north of U.S. Highway 12 west of Fort Atkinson, is a nature-based, conservation park that provides its visitors with 514 acres of picnic possibilities.

"Picnics are one of the more popular activities in the parks," Jefferson County Parks Director Joseph Nehmer, said. "It has



Grace Carson, 8, spins her brother, Tommy, during the ribbon-cutting ceremony for the Korth Park playground last summer.

■ AMY SMITH PHOTO

always been that way."

Picnicking is just one of the many activities the park has to offer, though. Other popular activities include hiking and cross-country skiing, snowshoeing, nature study, bird watching and dog walking.

The park can be accessed from both the western and eastern ends. The entrance to Dorothy Carnes Park West is on Radloff Lane, just off U.S. Highway 12. This portion of the park features a rentable shelter, bathrooms, water, kiosk, parking and an observation deck overlooking Rose Lake. The shelter, which was awarded for its design by the state, and an ADA accessible packed limestone trail lead to the overlook. The main trails are woodchip or mowed grass. Visitors also will encounter a Turtle Effigy mound when hiking the trails on this side of the lake.

The entrance to Dorothy Carnes Park East is on Jones Lane, just off of Banker Road, north of Fort Atkinson. At the entrance stands the Mason Log Home—

a log cabin restoration project completed in September—along with multiple farmstead buildings. Hearty Gardens, a community garden, makes its home here, too, as well as groomed trails with restroom facilities and a trailhead for two walk-in rustic camping sites.

If your looking for a picnic spot on the western side of the county—tucked away in rural Lake Mills—Korth Park offers breathtaking views of Rock Lake. In addition, the park provides access to an award-winning wooden shelter, a 3,500 square foot three-season shelter with kitchen facilities, newly installed playground equipment, restrooms and grills.

For those interested in hiking and running in addition to picnicking, the park offers a mowed trail system, as well as a gravel path along the lake that connects to the Glacial Drumlin Trail.

Pavilions at each of these Jefferson County parks are available to rent for the day, but you are wise to call far ahead of time, Nehmer warned. ■



After filling up on a picnic lunch, enjoy the newly installed playground equipment at Korth Park.

■ AMY SMITH PHOTO

Surveying Koshkonong area's sacred grounds

By Greg Romashko
Special to the Lakes Edition

It is a secluded oasis of green tucked away from the busy, four lane, Hwy. 26 heading south to Janesville. A place likely as peaceful and spiritual today as it may have been centuries before the first white man arrived in the area.

Here atop a wooded hillside that slopes down to Lake Koshkonong, ancient descendants of the Ho-Chunk people created sacred ground to honor their dead and praise the spirits of their world.

Today, this historic site, the remaining portion of the General Atkinson Group, is nationally recognized as one of the finest examples of effigy mound clusterings in the U.S. To have sacred effigy grounds untouched by white settlement right here in Wisconsin is something to behold and revere.

A wood framed, sign erected by the Ho-Chunk nation's Department of Heritage Preservation at the entrance of Jefferson County Indian Mounds and Trail Park proclaims this place as "an ancient burial and religious site of the Ho-Chunk People."

Listed on both the Wisconsin and National Registries of Historic Places, the park is home to 11 unique effigy mounds believed to be built by a civilization archaeologists refer to as the Late Wood-

land Indians more than 1,500 years ago. This indigenous society lived during the end of what is called the Woodland Period, which spanned more than 2,000 years from 1000 B.C. to 1300 A.D.

What distinguished these people from previous generations was the introduction of shapes or geometric patterns into effigy mound building. Prior to the Late Woodland Indians, mounds were typically built in a conical form only and served solely as burials. Like their predecessors it is no coincidence that the Late Woodland Indians chose sites for their communities close to bodies of water.

Wisconsin's lakes and rivers were teeming with all kinds of life. The Woodland people found great opportunities for their culture to thrive with abundant wildlife and edible plants available, including wild rice and berries. And where they hunted and harvested they chose to live and worship by Wisconsin's lakes and streams.

Effigy mounds were sited near the water as well by the Late Woodland Indians mostly as burials to honor their dead and express ritualistic communion with the spirit world. Some mounds began as burial sites but were built up over the years to the figurative forms you can see today.

Types of effigy mounds

Effigy mounds were also ingeniously constructed clan symbols and figurative representations of spirits of the upper and lower worlds (sky and water/land.)

Though mounds can be found in other states, it is the variety of patterns and animal forms, such as groups of birds, that are unique to Wisconsin. Our state is home to more effigy mounds than any other region in North America. Jefferson County alone may contain more than 1,000, including 500 by the shores of Lake Koshkonong.

Mounds around Wisconsin built by the Woodland Period Indians are found in four distinctive types:

(1) **Conical**—For burial. Dimensions: 1-3 ft. height. At least 8' in diameter.

(2) **Effigy**—For burial, clan symbols, spirit representations, and possibly ritual. Shapes such as: Birds, waterfowl, turtles (water spirit), bears, lizards, panthers (water spirit), deer, mace, dumb-bell, conceal, war club, tadpole, and single frog mounds. Dimensions: 2' to 4' in height; Length up to over 624' (wingspan of bird effigy at Mendota state hospital on the north shore of Lake Mendota).

(3) **Linear**—For Burial and possibly ritual.



A pear-shaped effigy mound near the entrance to Jefferson County Indian Mounds and Trail Park. (Photo courtesy of Jefferson County Parks Division)



Aerial view rendering of some of the more common found effigy mounds in Wisconsin (Illustration by Greg Romashko)

Continued on page 87

Effigy mounds

Continued from page 86

Shapes such as: club, or kidney, curved geometric forms. Dimensions: 120 ft. to over 600 ft in length.

(4) Intaglio Effigy—Excavated forms representing clan symbols, spirits for ritual only? Shapes existed such as those typical of effigy mounds. Supposedly only one of these in the entire world exists; the Panther Intaglio near Fort Atkinson along Riverside Drive.

It is a sad tragedy of our state's history that more than 70 percent of the effigy mounds that once existed in Wisconsin have been destroyed by road construction, agriculture and urban sprawl. To curtail that trend, in 1985 Wisconsin enacted the Burial Mounds Act prohibiting the desecration or removal of effigy mounds. And local historians, and preservation groups partnered with the Ho-Chunk, are out and about across the state to restore these mounds to their original condition and save them for future generations. One such individual who cared deeply about the legacy of Wisconsin's people and culture was the late Hugh Highsmith (1914-2009), a noted businessman, philanthropist and historian.

It is said his concern for preservation began one day when he discovered ancient native Wisconsin artifacts on his property. That discovery kindled Highsmith's drive for preserving the heritage of the Fort Atkinson region and

began his mission to acquire land around Lake Koshkonong that contained effigy mounds which he would, in turn, donate to Jefferson County to ensure the protection of these sacred sites.

Preservation became such a passion for Highsmith he authored a book titled "The Mounds of Koshkonong and Rock River" in 1997 to inform the public about the area's historic heritage and encourage others around the state to protect effigy mound sites from future development.

One of Highsmith's most noteworthy acquisitions occurred in 1993, when he purchased land that was home to the 11 effigy mounds that are now known as Jefferson County Indian Mounds and Trail Park. This land was part of a much larger sacred site that was once made up of 72 effigy mounds of the

Atkinson Effigy Group. Unfortunately, the majority of the mounds were covered over by the adjacent golf course built for the Koshkonong Mounds Country Club. Even so, it is exciting and moving to be able to walk along an ancient Indian trail in a tranquil place of worship that is a piece of Wisconsin's effigy mound heritage, Jefferson County Indian Mounds and Trail Park.

About the Park: The Jefferson County Indian Mounds Park and Trail is jointly run by Jefferson County and the Ho-Chunk Nation and is open daily.

DIRECTIONS: Head south on Highway 26. Turn onto Old Hwy. 26 at Koshkonong sign, then right onto Koshkonong Mounds Road. Proceed past Vinne Ha Ha Road until entrance to parking lot of Jefferson County Indian Mounds and Trail Park.

The Panther Intaglio

If you want to make a day out of experiencing American cultural heritage, you must visit the Panther Intaglio located on Riverside Drive across the street from the Rock River.

This sacred site was preserved in 1919 through the efforts of the Fort Atkinson chapter of the Daughters of the American Revolution. It is possibly the only subterranean mound in North America or the world.

Details: Excavated depression in the ground.
Dimensions: Around 120 feet long, 30 feet wide and three feet deep. Marked by a State Historical Society of Wisconsin marker.

Location: Take Highway 106 west out of Fort Atkinson. Site is located along Rock River at 1236 Riverside Drive.

'Four on the Floor' workshop at dog park

JOHNSON CREEK — Is your dog gravity-challenged?

Some dogs jump on people to get attention and also as a form of greeting. Although they may mean well, dogs can knock over small children, tear clothing and cause injury in their enthusiasm.

Many commonly-used techniques to discourage a dog from jumping up often make the problem worse, hurt the dog or put a person in danger.

Join the ever-popular behavior specialist Mittsy Voiles of the Lake Mills Veterinary Clinic to learn the right way to teach your dog to keep all "Four on the Floor." It will be the best 30 minutes you spend training your dog!

This free workshop, sponsored by the Humane Society of Jefferson County and the Lake

Mills Veterinary Clinic, will be held "rain or shine" at the Jefferson County Dog Park between 1 and 3 p.m. on Sunday, July 26.

Attendees and their canine companions may arrive at any time within that period and should allow 30 minutes to complete their session.

No bones about it ... dogs must be "people friendly," "dog friendly," current on all vaccinations and leashed with a four- to six-foot nonretractable leash.

Questions should be directed to the Humane Society of Jefferson County at (920) 674-2048.

The FREE
Consumer Action Website
www.pueblo.gsa.gov



NEWS



Submitted photo

RIDING THE RIVER

The Friends of Glacial Heritage Area will paddle down the Bark River Saturday, July 11. To join the two- to three-hour group paddle, email friendsofgha@gmail.com.



CAN YOU CANOE? — Join the Friends of Glacial Heritage Area on a free, family-friendly paddle down the Bark River on Saturday, July 11, followed by lunch at Cafe Carpe in Fort Atkinson, 18 S. Water St. West. Pictured above, Friends of GHA paddle down the Bark River in June of 2014. — Photo by Kevin Wiesmann.

Join the Friends of the Glacial Heritage Area

Paddle down the Bark River July 11

Join the Friends of Glacial Heritage Area on a free, family-friendly paddle down the Bark River on Saturday, July 11, followed by lunch at Cafe Carpe in Fort Atkinson, 18 S. Water St. West.

Choose from specially-prepared fare or the full menu, ranging from \$6 to \$10 per plate (see full menu at cafe-carpe.com). The paddle is about two to three hours long, depending on water levels.

The launch site is Burnt Village Park (put in at No. 48, County Highway N) to Fort Atkinson Public Launch (take out at No. 65, North Water Street). See the free GHA Watertrails Map for put-in/take-out locations, which is available at

glacialheritagearea.org, friendsofgha@gmail.com and 2 Rivers Bicycle & Outdoors locations.

It is asked that all paddlers be unloaded at Burnt Village Park and ready for shuttle vehicles at 9:15 a.m. so boats can be launched around 9:30 a.m.

This portion of the Bark River is a gentle, curving water route through maple woods and rolling Jefferson County countryside. Bring binoculars to spot birds along the way — an owl, egrets and many warblers were seen at last year's paddle.

To rent a canoe or kayak for the trip, contact 2 Rivers Bicycle & Outdoors, 33 Sherman Ave. West, Fort Atkinson, as soon as possible at (920) 653-2222. If renting a boat, please

be at 2 Rivers before 9:15 a.m. on the day of the paddle.

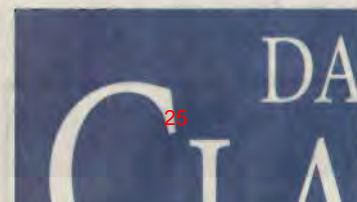
Contact friendsofgha@gmail.com if you plan to attend or with questions.

To accommodate paddling interests in the area, the Friends of GHA has organized the GHA Paddle Volunteer Corps to assist Jefferson County Parks Department in watertrail maintenance projects and to help organize group paddles throughout the area. The Bark River Paddle on July 11 is part of this effort.

The Corps is open to all interested in helping, and volunteers may choose to participate as little or as much as schedules permit. Contact Clare at friendsofgha@gmail.com or Kevin at kevinw@jeffersoncountywi.gov

to be added to the volunteer list and to learn about future group paddles organized both on weekends and weekdays.

The Friends of GHA is a non-profit, volunteer group supporting the outdoors, recreation and communities in Greater Jefferson County. Through parks, local trails, wildlife areas and watertrails, the GHA connects people to the natural beauty and outdoor recreation around them.





ON THE WATERFRONT — Saturday marked the fifth annual Fun Family Float sponsored by the Jefferson Rotary Club. Canoeists and kayakers launched at the Rock River boat landing along County Highway B

near Johnson Creek and floated down to Jefferson's Rotary Waterfront Park, where they then enjoyed ice cream floats or sundaes. Above, Tim and Carol Hunn get in their canoe at Johnson Creek, with help from Ro-

tarian Steve Lewis. Related photos on page A3. — Daily Union photo by Pam Chicker-ing Wilson.



FAMILY FLOAT — The Jefferson Rotary Club held its fifth annual Fun Family Float on Saturday. Canoeists and kayakers launched on the Rock River from near Johnson Creek and floated and paddled down to Jefferson's Rotary Waterfront Park. Finishers then got to enjoy ice cream floats or sundaes. Pictured above, Alexis Rue, 6, is flanked by mom Mindi and cousin Michelle Rue of Jefferson as they take off south of the County Highway B bridge at Johnson Creek. At right top, Alyssa Schmitt, 8, Watertown, picnics with Kayla Meinholz and Allan Schmitt at Rotary Park after completing their canoe trip down the river. At right bottom, AnnaLisa Hagenbart, 10, of Jefferson, poses in a kayak on the grass at Rotary Waterfront Park after completing the run down the river with relatives. Below, John McKenzie of Fort Atkinson, who came down the river with fellow kayaker Sharon Erickson, gets a little help in carrying his kayak from Rotarians Ron Michaelis and Steve Lewis. A related photo appears on A1. — Daily Union photos by Pam Chickering Wilson.



Camp close to home this summer

Summer's here and the great outdoors is calling. You don't have to go far for a great camping experience.

Jefferson County's Dorothy Carnes Park, north of Highway 12 and west of Fort Atkinson, provides two primitive walk-in camping opportunities at the parks east entrance off Jones Lane. The two primitive camping sites are open for walk-in camping only.

Dorothy Carnes Park features 513 acres to explore a multitude of habitats ranging from tall grass prairies to hard wood forests. Rose Lake, located adjacent to the park, is home to one of the most diverse bird populations in Wisconsin. Hikers of all abilities have access to more than 10 miles of trails.

Each of the two campsites

contains the following amenities: one picnic table, primitive seating, fire ring with grill, food hang, vault toilet and a level area for tent placement.

Camping reservations

Reservations can be made until October 31. Campsites are \$15 a night for each site. Payment by cash or check is required at the time of reservation.

All reservations must be made at least one week (7-days) in advance of desired check-in date. Cancellations made within 7 days of a scheduled reservation will result in forfeit of your fee.

To reserve a campsite, call (920) 674-7260 or stop by the parks department office, Jefferson County Courthouse, Room 204, 311 S. Center Ave., Jefferson.



Submitted photo

Dorothy Carnes Park near Fort Atkinson offers walk-in camping opportunities with hiking trails.

Campsites available at Dorothy Carnes Park

Looking for a place to camp that's close to home?

Jefferson County's Dorothy Carnes Park provides two primitive walk-in camping opportunities at the park's east entrance off Jones Lane?

The two primitive camping sites are open for walk-in camping only. The park offers visitors 513 acres on which to explore a multitude of habitats ranging from tall grass prairies to hard wood forests.

Rose Lake, located adjacent to the park, is home to one of the most diverse bird populations in Wisconsin. The park offers more than 10 miles of trails provided for recreational opportunities for users of all abilities.

Each of the two campsites contains the following amenities: One picnic table, primitive seating, fire ring with grill, food

hang, vault toilet and level area for tent placement.

Camping reservations

Campsites cost \$15 a night for each site. Reservations can be made now until Oct. 31.

Off-season reservations are made by special permit through the parks department office. All reservations must be made at least one week, or seven days, in advance of desired check-in date.

Payment, via cash or check, is required at the time of reservation. Cancellations made within seven days of one's scheduled reservation will result in forfeit of the fee.

To reserve a campsite, call (920) 674-7260 or stop by the Parks Department Office, Jefferson County Courthouse, 311 S. Center Ave., Room 204, Jefferson.

2015
THE JEFFERSON COUNTY DOG PARK
TERRI TINSLEY DOG EXERCISE AREA

The revenue is used for improvements to the park.

Registration Form
(PLEASE PRINT)

Date _____

Name _____

Address _____

City _____

State, Zip Code _____

E-mail address _____

Phone Number _____

Dog(s) Name Municipality & License Number:

1. _____

2. _____

3. _____

Breed of Dog/s _____

2015 TAG FEE (Valid Jan-Dec 2015) AMOUNT

\$25.00 Annual Dog Tag (1st Dog) _____

\$30.00 Non-Resident (1st Dog) _____

^{15.00}~~\$10.00~~ Senior Citizen (65yrs.+) _____

^{15.00}~~\$10.00~~ Additional Dog(s) Annual Tag _____

\$10.00 Replacement Tag _____

DAILY TAG FEE

\$ 5.00 Daily Permit per Dog _____

\$\$\$\$\$ Donations Welcome
"Thank you" _____

TOTAL _____

Make checks payable to: Jefferson County Parks

Please put the white copy of the permit along with your payment into the envelope and place in the collection tube.

KEEP THE YELLOW CARBON COPY.

Or mail to: Jefferson County Parks, Room 204
311 S. Center Ave, Jefferson WI 53549-1701

Phone: 920-674-7260 Email: dogpark@jeffersoncountywi.gov

Item 17a

RESOLUTION NO. 2013-____

**Approve Amended Glacial Heritage Area Memorandum of Understanding
with the State of Wisconsin**

WHEREAS, Resolution No. 2012-42 adopted August 6, 2012, approved the Glacial Heritage Area Memorandum of Understanding (MOU) with the State of Wisconsin wherein the State will purchase additional park land within Jefferson County to be operated on a cooperative basis with Jefferson County, and

WHEREAS, the Memorandum of Understanding as approved contained provisions whereby the Wisconsin Natural Resource Board would establish hunting seasons in the parks purchased with State funds as provided by Statute and Wisconsin Administrative Code, and

WHEREAS, the hunting seasons referred to in the original agreement were the State's policy as of June 1, 2010, and

WHEREAS, the Natural Resources Board has, after extensive public input, changed the rules applying to hunting within State park lands, which now also permits some trapping, which changes are shown in the attached amended MOU, and

WHEREAS, such changes are in accordance with State law and are set forth in the amendment of the MOU, and

WHEREAS, the Parks Committee has reviewed the proposed changes and recommends approval of the amended MOU,

NOW, THEREFORE, BE IT RESOLVED that the County Board Chair is authorized and directed to sign the Amended Memorandum of Understanding between the State of Wisconsin and Jefferson County for the Glacial Heritage Area which includes the new hunting and trapping provisions for State parks established by the Natural Resources Board.

Fiscal Note: No fiscal impact.

AYES _____
NOES _____
ABSTAIN _____
ABSENT _____

Requested by
Parks Committee

05-14-13

Phil Ristow: 05-09-13

**MEMORANDUM OF UNDERSTANDING
BETWEEN JEFFERSON COUNTY AND
THE STATE OF WISCONSIN DEPARTMENT OF NATURAL RESOURCES
CONCERNING THE OPERATION AND MANAGEMENT OF STATE
CONSERVATION PARKS, LINKING TRAILS AND WATER ACCESS PROPERTIES
WITHIN THE GLACIAL HERITAGE AREA**

I. Introduction.

The purpose of this Memorandum of Understanding, (MOU) is to set forth the agreements and understandings which have been reached between Jefferson County, (County) and the State of Wisconsin Department of Natural Resources (Department) regarding the acquisition, development, and operation of State Park properties the Department purchases and the County operates in the Glacial Heritage Area (GHA) in Jefferson County. The GHA project is described in the *Feasibility Study, Master Plan, and Environmental Impact Statement for the Glacial Heritage Area* (GHA Plan).¹

The Department and the County are interested in acquiring lands in the GHA project to provide a wide variety of high quality recreation experiences for the public. The Department will manage and operate the wildlife, habitat, and natural areas that it acquires in the GHA project. Jefferson County will manage and operate parks, trails, water access sites, and other recreation lands, both those it acquires as well as those acquired by the Department for the GHA project.

The County and the Department agree to work together to achieve their mutual goals as set forth below.

II. Description of the properties included in this MOU.

1. The GHA constitutes a significant number of properties and land management types. This MOU only applies to the following specific lands (referred to in this MOU as the "Property" or "Properties") that the Department has the authority to purchase as part of the GHA project area:
 - 2,900 acres for seven new proposed conservation parks.
 - 330 acres for linking trails adjacent to state lands
 - 2 larger sites (up to 400 acres total combined) for river-based access including camping and shore fishing).

(Refer to Addendum "A" for a complete listing of the above projects)
2. This MOU describes the process of determining and implementing recreational uses and habitat management actions at these Properties as well as the construction of facilities and their operation at these Properties.

¹ Endorsed by the Jefferson County Board by resolution on July 14, 2009 and approved by the Natural Resources Board on October 21, 2009. Document number LF: 050-2009.

3. The Department will acquire land for these Properties only from willing sellers.

4. The County may purchase lands within the project boundaries identified for the Department projects listed in 1. above, and may apply for Department grant funds for this purpose. A sponsor that is acquiring property with a stewardship grant that is within the acquisition boundaries of a Department project shall provide to the Department plans for public use and land management that are consistent with Department management plans for use of the property as well as with ch. NR 52, Wis. Adm. Code requirements. The Department shall have access to land acquired or developed with a stewardship grant in order to monitor compliance with the grant contract or carry out any management activity necessary to ensure the public's rights and safety.

5. The Department agrees to complete the environmental review process for each Property pursuant to s. 1.11, Stats., and ch. NR 150, Wis. Adm. Code, and the Department represents that it will make reasonable inquiry and state whether it has reason to believe that hazardous waste, noxious waste, or any other condition of the land subject to this MOU exists that would inhibit the ability of the County to maintain and improve the Property as provided for by this MOU. If, however, such prohibitive conditions are discovered, either the Department shall take all steps reasonably necessary to remove such conditions or the intent of this MOU being frustrated, the MOU shall terminate as to that particular Property, or to that portion of a particular Property affected.

6. The Properties acquired by the Department and operated by the County shall be subject to all state statutes and administrative rules that apply to state parks.

III. Implementation plans for the recreational use and operation of the Properties.

The boundaries within which the Department is authorized to acquire lands for the parks, trails, and river access sites are significantly larger than the proposed acquisition target for each of the Properties. As a result, the GHA Plan describes only generally the recreational uses and habitats to be managed at each of the Properties. Thus, the Department and County will need to develop more detailed plans for recreational use and habitat management for each of the Properties based on the features and attributes of the lands actually acquired, as well as on applicable statutory and code requirements. This section describes the development of these more specific plans, referred to as "implementation plans".

1. The process for planning and implementing future recreational uses and management actions on the Properties.
 - A. When the Department acquires land for a conservation park, linking trail, or river access site, the County and the Department (through its Bureaus of Facilities and Lands, and Parks and Recreation) will jointly chair a working group of local citizens and experts to provide guidance and input into the development of the implementation plan for a Property. Members of this group should represent a variety of interests related to the particular Property and could include, but are not limited to, those representing: recreation groups, conservation groups, tourism, economic development, farming and agriculture, community health interests, land trusts, and local government.

- B. If there is a need to make decisions about property management to reduce user or neighbor conflicts the Department and County representatives will mutually agree upon a course of action using existing policies found in ch. NR 45, Wis. Adm. Code and in Department guidance and manual codes. [A listing of relevant Department published guidance and manual codes is provided in Addendum “B”].
- C. The scope of the implementation plan for a Property shall be in agreement with the GHA Plan as to recreational uses, land management, and facility development. Revisions to the GHA Plan shall be in the form of a “variance” or “amendment”. The governing guidance and procedures for undertaking revisions to the GHA Plan shall be per ch. NR 44, Wis. Adm. Code requirements.
- D. As additional land is acquired for a Property, an implementation plan will be revised to address the new land. For example, the addition of land to a park may enable the Property to provide some types of trail activities not included in the original GHA Plan.
- E. Implementation plans for the linking trails will be completed when access rights to a functioning amount of corridor have been acquired. That is, it would be appropriate to defer developing an implementation plan for a linking trail until a trail of meaningful experience could be constructed. Any use of linking trails prior to the creation of an implementation plan shall be limited to uses provided in the original GHA implementation plan, and best management practices will be utilized to assist in management during the interim.
- F. The County, via the County Board, and the Department, via the Division Administrator for Lands, shall both approve the implementation plans and any revisions to the GHA Plan. Notwithstanding the above, the Division Administrator shall require that any proposed implementation plan that requires an “amendment” to the GHA Plan shall obtain the Department’s Natural Resource Board’s approval.

2. The components of the Implementation Plans.

The implementation plans will describe in detail and map the specific natural and cultural resources, existing land cover and vegetation characteristics, and other unique features present on each Property. The implementation plans will also describe what recreation activities would occur in which parts of the Property, what facilities would be developed, what habitats would be managed and restored, and what land management techniques would be used.

- A. Implementation plans are not obligated to comply with ch. NR 44, Wis. Adm. Code requirements. However, the plans shall be consistent with those requirements, to the extent practicable. The implementation plans must include, at a minimum, the following:
 - i. A public notification and participation process allowing for comments on the draft implementation plan.

- ii. Maps showing existing and proposed future land cover, including identifying the known locations of rare species or high quality natural communities from the Department's Natural Heritage Inventory database.
- iii. Descriptions of habitat management goals and strategies for different portions of the Property.
- iv. A map showing the location of known archaeological, historic, or cultural features or other sensitive sites and plans to address them.
- v. A list of allowed recreational uses, what times of the year they are allowed, and a map showing on which portions of the Property. General locations of trails should be mapped to the degree possible.
- vi. If hunting will be allowed on the property, a description of what hunting seasons as defined in chapter NR 10, Wis. Adm. Code, will be allowed, on which portions of the Property, and the number of permits to be issued.
- vii. A list of anticipated support facilities (e.g. restrooms, picnic areas, bird watching platforms, shelters, or parking lots) and a map showing general locations of anticipated support facilities.
- viii. Projected development costs.
- ix. Official name of the Property.
- x. Name and address of the office that will be managing the Property.

IV. Operating and Managing the Properties.

1. The County will assume all property inspections, enforcement, and maintenance responsibilities for the Properties. Standards shall be consistent with the Department's *Property Manager's Handbook* and its *Recreation Operations Handbook* (See Addendum B).
2. The County, in connection with this MOU, shall open the facilities on the Properties to the general public subject to reasonable rules and regulations, fees, and charges, and in an acceptable manner as outlined below for the management and operation of the Properties.

A . Rules and regulations.

Pursuant to s. NR 45.02, Wis. Adm. Code, the Department through this MOU and the easement for a specific Property, retains management, supervision, and control over the premises of each Property for the purpose of enforcing ch. NR 45, Wis. Adm. Code requirements, when needed to protect the Property. Daily routine enforcement remains the responsibility of the County. The County and other local units of government may adopt ch. NR 45, Wis. Adm. Code provisions as ordinance. (In the instances where the County purchases lands, it may be necessary for the County to provide the Department an easement for those properties in order to provide ch. NR 45, Wis. Adm. Code authority.)

B. Admission Fees.

The County must use the Department's daily and annual trail pass fee program should it charge a use fee on the linking trails that are designated as "State Trails" under s. NR 51.73, Wis. Adm. Code. If trail use fees are charged, all statutory references to admissions will be honored, including the State Trail Pass, both annual and daily, the conservation patron license, the senior citizen recreation card, and the disabled veteran's card issued by the Department shall be honored without additional trail use charges. The County shall agree to waive all trail use fees on State Parks Open House Day (date as determined by the Department), National Trails Day (the first Saturday in June), and any other statutorily required dates, or those established by executive order. If the County uses the Department's trail pass fee program, the County may retain a commission on its sale of annual and daily trail passes to be used for trail operations and maintenance as provided for in 27.01 (8m), Stats. A separate *Trail Pass Sales Agreement* between the County and the Department will be executed, detailing the sales and remittance procedures to include the actual commission rate (expressed as a percentage of sale). The County may use sub-vendors to sell the pass. In the event ss. 27.01(8) or (8m), Stats. is modified, the above section on admission fees shall automatically reflect the modification.

After written acceptance by the Bureau of Parks and Recreation Bureau Director, the County may charge its own admission or use fees at the Properties if desired. Revenue from such fees shall be used on maintenance, upkeep and facility construction on the Properties. If County fees are charged, the State Park Admission sticker, both annual and daily, the conservation patron license, Department waiver cards held by disabled vets and POW's, and the senior citizen recreation card issued by the Department shall be honored without additional County admission charges. The County shall agree to waive all admission fees on State Parks Open House Day (date as determined by the Department). No commission will be paid on County sale of State Park Admission stickers.

C. Maintain in a Proper Manner.

The County will ensure that the Properties are maintained in a decent, safe and sanitary condition at all times. Designated use inspections shall be performed in a manner consistent with Department Manual Code (MC.) 2527.2.

3. Hunting and trapping in the conservation parks.

It is the Department's and the County's intent that the development of the implementation plans promotes and enables the establishment of hunting and trapping opportunities within the conservation parks. Hunting and trapping seasons have been established by the Natural Resources Board, under the authority of 2011 Wisconsin Act 168 and s. 29.089, Wis. Stats., for Wisconsin State Park property holdings which include the GHA conservation parks acquired and owned by the Department. Additional hunting and trapping seasons may be approved by the Natural Resources Board. Specific areas within the Properties for hunting and trapping will be initially listed in the implementation plans and will not conflict with the conservation park's primary users or approvals provided by the Natural Resources Board or the Department. The County shall determine primary users and potential user conflict issues, with concurrence and approval

from the Department. When the County uses stewardship grant funds for a Property purchase, chapter NR 52, Wis. Adm. Code requirements are applicable.

Comment [KAH1]: Isn't this already addressed previously?

General state park hunting and trapping seasons and restrictions, map(s) indicating the open and closed areas of the Department-owned GHA properties, and any GHA property-specific rules, as approved by the Natural Resources Board, are attached to this memorandum as Addendum C. The Natural Resources Board may, at the request of the Department or any interested party, amend the hunting and trapping opportunities applicable to all state parks, or the GHA properties specifically. Public notice of Board agenda items is provided on the website for the Natural Resources Board, available at <http://dnr.wi.gov/about/nrb/agenda.html>. Email and text message alerts are available when the agenda is posted or updated. The Department shall make reasonable efforts to notify the County of agenda items that affect hunting and trapping opportunities in the GHA.

Comment [KAH2]: Formatting? Previously it is listed as "A" as a subparagraph under paragraph #2. Now, it is "a". Consistency?

Comment [KAH3]: Sometimes "State Park" is capitalized and sometimes it is not. Are we consistent as to when we capitalize and when we do not?

In the event that the Natural Resources Board approves a change in hunting or trapping opportunities applicable to the GHA, the change shall be effective on the date of the Board action. As the Properties go through development, the Department in consultation with the County, may restrict hunting and trapping within 100 yards of public designated use areas such as picnic shelters, vistas, campgrounds, play areas, and trails. When any such changes are made, the Department shall make corresponding changes to its maps that are available to the general public. The Department shall send a revised Addendum C to the County within a reasonable time. The County shall be deemed to agree to and incorporate the revised Addendum C in to this MOU.

The County may develop recommendations to be submitted to the Natural Resources Board for additional hunting opportunities on the Properties. Requests for additional hunting opportunities shall include:

Comment [KAH4]: and trapping?

Comment [KAH5]: and trapping?

- a. A complete description of the seasons and species being requested.
- b. A written request for any specific rule changes.
- c. A map and description of any areas proposed to be closed to hunting.

Comment [KAH6]: and trapping?

If the County chooses to issue hunting access permits, the permits shall be issued using a system identified in the implementation plan that provides all interested people an equal opportunity. The County may charge a reasonable processing fee for the hunting access permits to recover the costs of issuing the permits. If a limited number of permits are issued, the number of permits will be established in consultation with the Department's Wildlife Management staff. Approval of individual property permit plans shall be approved in advance by the Department's District Land Program Manager and its Bureau of Parks and Recreation Director.

The County shall be responsible for providing all necessary signage, customer service staffing and law enforcement staffing, to the extent resources are available, during established hunting periods.

Comment [KAH7]: Should this whole section also address trapping?

4. Revenue generation and use of funds.

The implementation plan for a Property may call for or allow actions that generate land management revenue including, but not limited to, short term sharecropping, harvest of wood products, and rental fees. Wisconsin State Law requires that land management revenue received on land owned by the state shall become the property of the state and shall be remitted to a state account. The Department shall deposit this revenue in a segregated land rental account that would allow land management monies to be paid out to the County for the purpose of offsetting site restoration, management, or operation costs at the Property from which the revenue was generated.

On an annual basis, and at least thirty (30) days prior to the start of the state fiscal year, the County may prepare and submit to the Department an operations plan for a Property that could include the proposed expenditure of state retained land management revenues, for statutorily approved purposes pursuant to s. 20.370(1)(jr), Stats., for that Property. The County may draw against funds from a state approved plan for any particular Property, up to the amount approved in the plan, but not to exceed the available land management revenues accrued for that Property. For the purposes of this MOU, "rental" shall mean any contractual rental of lands or facilities for a period of thirty (30) days or longer.

V. Constructing and maintaining facilities to support recreation activities.

1. The County has primary responsibility, within available funding, for the planned construction and operation of facilities to support recreation activities on the Properties, to include the payment for initial construction as well as ongoing maintenance, repair, refurbishing, and expansion of the facilities.
2. The Department will work with the County to identify funding sources, to include Department managed grants, for the construction of recreation facilities at the Properties that are part of this MOU.
3. The Department and County understand that funding for acquisitions and developments of different aspects of the GHA project will vary over time. Under the terms of the easement(s), the County may construct, maintain, repair, and operate the Properties as funding becomes available. The Department has no obligation to develop, operate, maintain, or repair facilities at the Properties at any time.
4. The County shall secure and comply with all federal, state and local permits and licenses required for the construction, installation, operation, maintenance, repair, and reinstallation, of the recreational facilities including, without limitation, zoning, building, health, environmental permits or licenses, and shall indemnify the Department against payment of the costs therefore and against any fines or penalties that may be levied for failure to procure or to comply with such permits or licenses as well as any remedial costs

to cure violations thereof. The Department agrees to cooperate with the County in securing any such permits or licenses by providing information and data upon request.

5. If the Department or County terminates this MOU and the underlying easement for an individual property the Department shall first have the right to purchase any improvements at the then current replacement value at that Property. Should the Department not exercise this right within 180 days of the termination of this MOU and the easement, the County shall have the right to remove any improvements which it funded without state funding assistance.

VI. Development of Easements.

1. Upon completion of an implementation plan, the Department will grant a perpetual easement to the County for each specific Property. These easements will contain specific language from this Memorandum of Understanding along with a provision that provides for extinguishment of the easement.
2. These easements will provide the County the right to manage lands and develop, operate, repair, and maintain facilities as described in the implementation plan.
3. The County accepts the condition of the Properties "as is" on the dates that the easements are signed.
4. As additional parcels are acquired by the Department for the Properties, the existing easements may be amended to reflect the ownership changes and amendments to the implementation plan.

VII. Obligations of the Department and the County.

1. Recreational facilities, including trails, will meet or exceed Department standards for construction and operation. Facility construction will require Department of Administration approval. All facility construction must comply with the uniform commercial building code as administered by the Department of Commerce.
2. Final approval of any changes to property names for lands that the Department owns rests with the Department. The County will coordinate naming Properties with the Department. Final approval rests with the Department's Natural Resources Board. The Department encourages property naming based on historical references or natural features. All naming of Properties or facilities shall comply with Department manual code MC 2281.1, *Naming Properties and Facilities*. For example, the Property could be named for a geologic feature that it incorporates or is located nearby. For the benefit of users, it is recommended that property naming be consistent for the entire length of a trail, regardless of political boundaries.
3. Any signage or display material relating to the Properties shall clearly identify the Properties as owned by the Department and under the management and control of the County. If Stewardship or Land and Water Conservation funds were used in acquisition, this shall be noted with standard Department signage. No commercial advertising shall

be allowed on the Properties. The Department reserves the right to remove non-compliant signage located on Properties it owns. Naming of facilities after donors is discouraged. Any facility naming shall require both County approval and Department approval from the Division Administrator of Lands.

4. The County may enter into agreements with Friends Groups which meets the criteria in s. NR 1.71, Wis. Adm. Code. The Department, through its Bureau of Parks and Recreation and via the Division Administrator for Lands, shall also be a co-signer of any Friends Groups agreement. Any remainder funds held by a Friends Group for a state property, shall become the property of the state at the point of dissolution of an agreement.
5. If desired by the County, as segments of the linking trail network are acquired and developed, the Department will consider designating these segments as "State Trails" under section NR 51.73, Wis. Adm. Code. The trails will be included in any appropriate list of state trails.
6. All timber harvests on state lands shall be approved by the Department prior to commencement.
7. The Department will make its Adopt-A-Trail program available to the County. The Department has an application process for groups interested in adopting a section of trail. This program is similar to the Department of Transportation's Adopt-A-Highway program. The County may enroll volunteers in the Adopt-A-Trail program sponsored by the Department, following Department policies and procedures.
8. In the exercise of their rights herein, including but not limited to the operation of the Properties, the Department and the County shall not discriminate against any member of the public on the basis of age, race, creed, color, handicap, sex, marital status, arrest or conviction records, ancestry, sexual orientation, or membership in the National Guard, state defense force or any other reserve successors or designees.
9. Each party shall be responsible for the consequences of its own acts, errors, or omissions and those of its employees, boards, commissions, agencies, officers, and representatives and shall be responsible for any losses, claims, and liabilities which are attributable to such acts, errors, or omissions including providing its own defense. In situations including joint liability, each party shall be responsible for the consequences of its own acts, errors, or omissions and those of its employees, agents, boards, commissions, agencies, officers and representatives. It is not the intent of the parties to impose liability beyond that imposed by state statutes.

VIII. General.

1. This Memorandum of Understanding is subject to all applicable laws and regulations.
2. This Memorandum of Understanding may be revised or amended by mutual written agreement of the Department and the County.
3. The Department must approve, and has sole discretion over, all land transactions, trail crossings, and easements for the Properties, but the County will be the first point of

contact for inquiries from the public and/or private entities on these matters. The Department will be responsible for addressing encroachment issues. The Department shall be responsible for all negotiations, document preparation and document recording in these matters.

4. An annual meeting between the County and Department will take place to review development and acquisition progress, real estate issues, operational problems and maintenance standards needing attention and to exchange ideas and information for the good of the GHA project.
5. This MOU shall not be construed as creating a public debt on the part of the Department in contravention of Article VIII, Wisconsin Constitution and all payments or obligations hereunder are subject to the availability of future appropriations.

IX. Consideration.

Following the development of an implementation plan, the Department will execute an easement with the County for one dollar or other valuable consideration to allow the County to manage and operate the Property. The County will develop, operate, repair, and maintain the lands and facilities according to this MOU, the easement and per the implementation plan.

X. Termination.

1. County. The County may terminate this Memorandum of Understanding or any easement from the Department established under this MOU by providing to the Department ninety (90) days written notice of said termination. In the event the County terminates this Memorandum of Understanding or any of the easements from the Department, the County will assume compliance responsibility for any state or federal grant obtained for facility development and support purposes on any of the Properties.
2. Department. The Department may terminate this Memorandum of Understanding or any easement with the County established under this MOU by providing to the County ninety (90) days written notice of said termination. In the event the Department terminates this Memorandum of Understanding or any of the easements from the Department, the Department will assume compliance responsibility for any state or federal grant obtained for facility development and support purposes on any of the Properties.
3. The Department may terminate this Memorandum of Understanding or any easement with the County under the following circumstances:
 - A. The County breaches any term or condition in the Memorandum of Understanding or an easement and said breach remains uncorrected for a period of sixty (60) days from the receipt of the Department's written notification of said breach by the County. In the event the County breaches any term or condition of this MOU or an easement from the Department, the County will assume compliance responsibility for any state or federal grant assisted areas on any of the Properties, if the MOU is terminated, and for the specific Property if an easement is terminated.

B. The Department determines that the continued use of the Properties as conservation parks, linking trails, or river access sites would be inconsistent with the management needs or objectives of the Department or the State of Wisconsin. In exercising its termination rights under this provision the Department shall give the County one-hundred eighty (180) days notice of termination and reimburse the County for developed improvements accepted and approved by the Department in writing, subject to consideration of any state or federal grant funds used in the development of the improvements and the availability of future appropriations. The Department will assume compliance responsibility for any federal grant obtained for facility development purposes on the facilities located on a Property it accepts.

IN WITNESS WHEREOF, Department and the County have caused this Memorandum of Understanding to be executed in their respective names by their respective duly authorized representatives.

JEFFERSON COUNTY

By _____
 {NAME AND TITLE OF SIGNER} Date

STATE OF WISCONSIN DEPARTMENT OF NATURAL RESOURCES

By _____
 Cathy Stepp, Secretary Date

ADDENDUM "A"

**TO
MEMORANDUM OF UNDERSTANDING
BETWEEN THE STATE OF WISCONSIN
AND
JEFFERSON COUNTY, WISCONSIN**

DATED: _____ 2011

The following is a complete list of specific properties and acreages that are initially affected by the MOU:

A. Seven Conservation Parks:

1. Cushman Mill Park – 700 acres
2. Holzhueter Park – 300 acres
3. Hope Lake Park – 200 acres
4. North Shore Moraine Park – 300 acres
5. Oakland Highlands Park – 800 acres
6. Red Cedar Lake Park – 100 acres
7. Scuppernong Valley Park – 500 acres

B. Linking Trails. The Department expects to acquire approximately 330 of the 1,334 acres for linking trails within the GHA. Lands acquired by the Department for Linking Trails shall be acquired under the authority granted by state statute.

C. Water Based Access Sites (2). These larger water based access sites would be located along the Crawfish, Rock, or Bark Rivers or major tributaries. The total acquisition goal for these sites is 400 acres combined. The sites would be acquired as State Recreation Areas.

ADDENDUM "B"

**TO
MEMORANDUM OF UNDERSTANDING
BETWEEN THE STATE OF WISCONSIN
AND
JEFFERSON COUNTY, WISCONSIN**

DATED: _____ 2011

***Wisconsin Department of Natural Resources
Applicable Manual Codes and Guidance***

The applicable manual codes and written guidance are as follows:

Manual Codes:

1. Department Recreation Operations Handbook – MC 2505.1
2. Department Property Managers Handbook
3. Department Property Planning Handbook – MC 2210.1
4. Signing/Inspection of Designated Use Areas - MC 2527.2
5. Closing Department Lands for Emergencies or Resource Protection
– MC 2527.1

Written Guidance:

- A. Hunting on State Park Lands
- B. Managing Forests on State Park Lands

ADDENDUM "C"

TO
MEMORANDUM OF UNDERSTANDING
BETWEEN THE STATE OF WISCONSIN
AND
JEFFERSON COUNTY, WISCONSIN

DATED: _____ 2013

Hunting, Fishing, and Trapping on state-owned properties in the Glacial Heritage Area

- A. **Hunting and Trapping Seasons and Hours:** The approved period for both hunting and trapping on the Properties is split into a fall/winter period and a spring period as follows:
- i. The Fall Hunting & Trapping period for open portions of parks in the department's plan will run from Nov. 15th –Dec. 15th each year, except that hunting by legal archery methods (bows & crossbows) will remain open until the end of the archery deer season, ending on the Sunday nearest January 6th.
 - ii. The Spring Hunting & Trapping period for open portions of parks in the department's plan will run from April 1st through the end of the 3rd Spring Turkey hunting time period (the Tuesday nearest May 3rd).

Hunters and trappers may enter the Properties one hour prior to the daily hunting and trapping starting times established in chapter NR 10, Wis. Adm. Code. For species where no daily opening and closing times have been established, hunters and trappers may enter the park one hour prior to sunrise. Hunters and trappers must leave the park by the general closing hour of 11 pm. Hunters may only hunt within established daily hunting hours, when hours are established in chapter NR 10, Wis. Adm. Code.

B. **General Hunting, Fishing, and Trapping Restrictions:**

- i. All laws and regulations of statewide applicability apply to the Properties.
- ii. Traps which may be used are restricted to "dog proof traps" and traps placed completely under water.

- iii. Trapping is prohibited within 100 yards of any designated use area, as defined in s. 23.115(1), Wis. Stat. existing or established on the Properties.
- iv. Fishing with a bow and arrow or spears is prohibited within 100 yards of any designated swimming beach or boat launch existing or established on the Properties.

C. GHA Property-Specific Restrictions:

None currently in effect.

D. GHA Property Hunting Maps:

Attached hereto. See the following page(s).

Mary Nimm

From: Joe Nehmer
Sent: Monday, June 29, 2015 12:59 PM
To: Mary Nimm; Kevin Wiesmann
Cc: Augie Tietz; Mike Kelly
Subject: FW: Holzhueter Implementation Plan
Attachments: Holzhueter Swap Map.pdf; Holzhueter Draft Plan Map.jpg

fyi

From: Witecha, Mark J - DNR [<mailto:Mark.Witecha@wisconsin.gov>]
Sent: Monday, June 29, 2015 12:49 PM
To: Lobner, Eric C - DNR
Cc: landesignmb@gmail.com; Matthews, Gregory K - DNR; Joe Nehmer; Bolser, Sarah A - DNR
Subject: Holzhueter Implementation Plan

Hello Eric,

We held a meeting today on the Holzhueter Farm Conservation Park implementation plan, and are looking for clarification and affirmation on a couple of items:

1. On the attached map titled "Holzhueter Swap Map", which you previously provided, the area with the green boundary (excluding the portion being swapped with Parks) is also considered Wildlife Area, correct?
2. There is also a draft plan map attached which proposes a picnic area and walking trail within the Wildlife Area portion. Do we have any objections or restrictions on those proposed uses within the WA portion?

Just to keep you in the loop, we also discussed including some language in the plan about a portion of the park being considered part of Waterloo Wildlife Area, but that the entire park will be managed by the county as a Conservation Park. We also discussed including language in the plan about the Wildlife Area not having the hunting restrictions associated with the Parks portion, and providing an accompanying map, so we'll need official boundaries for the WA portion. Lastly, we touched on having to update the MOU with the county to include management of the Wildlife Area, and holding a public meeting to gather input.

Please provide clarification on the above items, and let us know if you have any thoughts or concerns regarding what was discussed.

Thank you,

We are committed to service excellence.

Visit our survey at <http://dnr.wi.gov/customersurvey> to evaluate how I did.

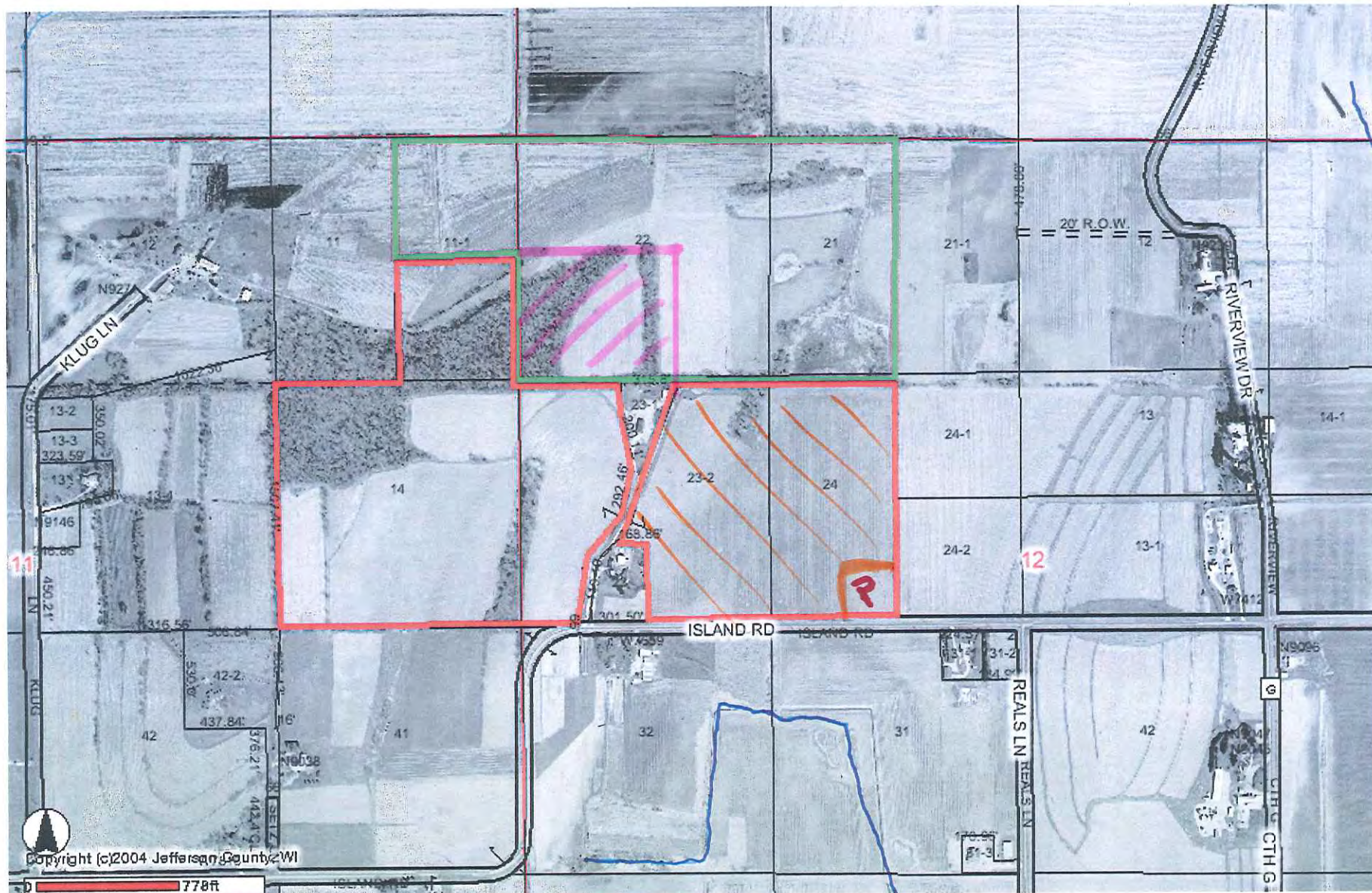
Mark Witecha

Jefferson Co. Wildlife Biologist – Bureau of Wildlife Management
Wisconsin Department of Natural Resources
180 Sandy Beach Rd.
Lake Mills, WI 53551
Phone: (920) 648-3054
Cell Phone: (920) 988-2996
mark.witecha@wisconsin.gov




172

49



 - WILDLIFE → PARK

 - PARK → WILDLIFE

Notice: Information requested on this form is required by the Department when applying for a reimbursement of eligible expenses. The Department will not consider your payment request unless you complete and submit this form.

Instructions: Itemize all project expenses, including donated labor, and attach photocopies of proof of expenses and payments for each item listed. See reverse for instructions. Use additional worksheets as necessary, numbering each. Submit with Grant Payment Request, Form 8700-001, or specific grant reimbursement form, to your DNR Grant Specialist.

Project Sponsor / Management Unit Name

JEFFERSON COUNTY
 PARKS DEPARTMENT

Grant Number

S-4362

Does this grant project include State Lab of Hygiene sample analysis costs? Yes No

Start Date	Project Title	Project Number	Eligible Project Cost Description (Contract Agreement)	Amount Paid	Amount Donated
06/25/2015			Jefferson County Snowmobile Alliance Grooming	\$2,740.00	
06/25/2015			Jefferson County Snowmobile Alliance Trail Maintenance	\$44,654.89	
			Jefferson County Snowmobile Alliance Signs/Hardware	\$415.20	

Grant Begin Date 07/01/2014	Grant End Date 06/30/2015	Total Project Cost: (Sum of Paid Subtotal and Donated Subtotal per this page)	\$47,810.09	Paid Subtotal \$47,810.09	Donated Subtotal
Total Project Costs: (Sum of Paid Subtotal and Donated Subtotal for all pages)			\$47,810.09		

Jefferson County Snowmobile Trail Maintenance Payout - 2014-2015

Grant Amount	\$ 45,675.00
Less Administrative Charges	\$ -
Total to be Paid to JCSA	\$45,675.00

Total for Grooming	\$ 2,740.00
Total for Labor and Equipment	\$ 44,654.89
Miscellaneous Receipts (signs, etc.)	\$ 415.20
TOTAL	\$47,810.09

CLUB	Grooming Fees	Labor & Maintenance	Misc. Invoices	TOTAL
JCSA	\$ -	\$ -	\$ -	\$ -
Bark River Riders	\$ -	\$ 2,252.46	\$ -	\$ 2,252.46
Drift Skippers	\$ -	\$ 1,846.50	\$ 51.60	\$ 1,898.10
Helenville Hill Hoppers	\$ -	\$ 2,886.50	\$ -	\$ 2,886.50
Hubbleton Riders	\$ 325.00	\$ 8,574.50	\$ -	\$ 8,899.50
ICE	\$ 90.00	\$ 1,902.65	\$ -	\$ 1,992.65
J.C. Riders	\$ -	\$ 3,421.68	\$ 363.60	\$ 3,785.28
Jefferson Snow Hawks	\$ 991.50	\$ 3,701.50	\$ -	\$ 4,693.00
Jefferson Snowstormers	\$ 610.00	\$ 7,154.48	\$ -	\$ 7,764.48
Palmyra Ridge Riders	\$ 260.00	\$ 1,345.00	\$ -	\$ 1,605.00
Rome Sno-Barons	\$ -	\$ 2,983.00	\$ -	\$ 2,983.00
Silver Creek Riders	\$ 130.00	\$ 1,130.00	\$ -	\$ 1,260.00
Sullivan Sno-Drifters	\$ -	\$ 1,117.25	\$ -	\$ 1,117.25
Twin River Riders	\$ 210.00	\$ 4,017.28	\$ -	\$ 4,227.28
Watertown	\$ -	\$ 1,859.25	\$ -	\$ 1,859.25
WCSA	\$ 123.50	\$ -	\$ -	\$ 123.50
Whitewater Sno-Seekers	\$ -	\$ 462.84	\$ -	\$ 462.84
TOTAL	\$ 2,740.00	\$ 44,654.89	\$ 415.20	\$ 47,810.09

LABOR & EQUIPMENT						
CLUB	Labor	JC Worksheet	Equipment	JC Worksheet	Difference	Total
Bark River Riders	\$ 474.50	\$ 474.50	\$ 1,823.60	\$ 1,777.96	\$ (45.64)	\$ 2,252.46
Fort Drift Skippers	\$ 565.50	\$ 565.50	\$ 1,281.00	\$ 1,281.00	\$ -	\$ 1,846.50
Helenville Hill Hoppers	\$ 799.50	\$ 799.50	\$ 2,087.00	\$ 2,087.00	\$ -	\$ 2,886.50
Hubbleton Riders	\$ 3,815.50	\$ 3,815.50	\$ 4,759.00	\$ 4,759.00	\$ -	\$ 8,574.50
ICE	\$ 601.25	\$ 601.25	\$ 1,301.40	\$ 1,301.40	\$ -	\$ 1,902.65
J.C. Riders	\$ 1,293.50	\$ 1,293.50	\$ 2,128.46	\$ 2,128.18	\$ (0.28)	\$ 3,421.68
Jefferson Snow Hawks	\$ 1,358.50	\$ 1,358.50	\$ 2,343.00	\$ 2,343.00	\$ -	\$ 3,701.50
Jefferson Snowstormers	\$ 3,003.00	\$ 3,003.00	\$ 4,119.14	\$ 4,151.48	\$ 32.34	\$ 7,154.48
Palmyra Ridge Riders	\$ 819.00	\$ 819.00	\$ 526.00	\$ 526.00	\$ -	\$ 1,345.00
Rome Sno-Barons	\$ 819.00	\$ 819.00	\$ 2,164.00	\$ 2,164.00	\$ -	\$ 2,983.00
Silver Creek Riders	\$ 325.00	\$ 325.00	\$ 805.00	\$ 805.00	\$ -	\$ 1,130.00
Sullivan Sno-Drifters	\$ 396.50	\$ 383.50	\$ 712.00	\$ 733.75	\$ 21.75	\$ 1,117.25
Twin River Riders	\$ 1,238.25	\$ 1,238.25	\$ 2,779.03	\$ 2,779.03	\$ -	\$ 4,017.28
Watertown	\$ 809.25	\$ 809.25	\$ 1,050.00	\$ 1,050.00	\$ -	\$ 1,859.25
Whitewater Sno-Seekers	\$ 169.00	\$ 176.00	\$ 286.84	\$ 286.84	\$ -	\$ 462.84
TOTAL	\$ 16,487.25	\$ 16,481.25	\$ 28,165.47	\$ 28,173.64	\$ 8.17	\$ 44,654.89

GROOMING				MISC	
	Original Amount	Corrected Amount	Difference		
Hubbleton Riders	\$ 325.00	\$ 325.00	\$ 0.00	Signs	\$ 363.60
JCSA (ICE)	\$ 90.00	\$ 90.00	\$ (0.00)	Menard's Invoice	\$ 24.58
Jefferson Snow Stormers	\$ 610.00	\$ 610.00	\$ 0.00	Menard's Invoice	\$ 27.02
Snow Hawks	\$ 1,003.50	\$ 991.50	\$ (12.00)	TOTAL	\$ 415.20
Palmyra Ridge Riders	\$ 260.00	\$ 260.00	\$ -		
Silver Creek Riders	\$ 130.00	\$ 130.00	\$ -		
Hubbleton Riders - Twin Rive	\$ 210.00	\$ 210.00	\$ -		
WCSA	\$ 247.00	\$ 123.50	\$ (123.50)	Grey Calculation Errors - decrease in charges	
TOTAL	\$ 2,875.50	\$ 2,740.00	\$ (135.50)	Blue Calculation Errors - increase in charges	

Notice: Project Sponsors are required to provide information requested on this form when applying for payment of a grant funded by the Department. See Reporting Requirements on reverse. The Department will not process your payment request unless you provide all information requested. This information will be used to determine the amount of your payment and issue your check. Personally identifiable information collected will be used for program administration and may be made available to requesters as required under Wisconsin's Open Records law [ss. 19.31-19.39, Wis. Stats.].

Submit one copy of this request form, your completed Grant Payment Worksheet (Form 8700-002), and required documentation, listed on reverse, to your DNR Grant Specialist. See the DNR web site for additional information: <http://dnr.wi.gov/Aid>

Project Sponsor Information	
Project Sponsor / Management Unit Name Jefferson County Parks Department	Grant Number S-4362
Project Name Jefferson County Snowmobile Trail Maintenance, 2014-2015	County Jefferson
The DNR will mail the check to the name identified on the application as "Check Recipient." Questions? Contact DNR Grant Specialist.	Type of Request: <input type="radio"/> Partial <input checked="" type="radio"/> Final

Payment Information (see reverse for instructions)

A. Payment Record to Date	Amount	This Column for DNR Use Only
1. Amount of Grant (from original or amended Grant Agreement)	45,675.00	
2.a. Advance Payment Received, if any	22,837.00	
2.b. Total Payments Received after Advance Payment, if any		
2.c. Total Payments Received to Date (Lines 2.a. + 2.b.)	22,837.00	
3. Funds Remaining (Line 1 minus Line 2.c.)	22,838.00	

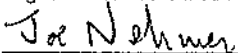
B. Cost Share Amount		
4. Total Eligible Project Costs this Period. Transfer data from "Total Project Costs" field on Worksheet (Form 8700-002)	\$ 45,675.00	
5. Your Share of Costs. See Line 5 instructions on reverse.	\$	
6. State Share of Costs (Line 4 minus Line 5) NOTE: This line cannot exceed the amount in Line 1.	\$ 45,675.00	

C. This Payment Request and Grant Balance Remaining		
7. Amount of Advance Payment Received (from Line 2a) (if no advance payment received or already accounted for, enter \$0)	\$ 22,837.00	
8. Amount Eligible this Claim (Line 6 minus Line 7) NOTE: This line cannot exceed the amount in Line 3.	\$ 22,838.00	Amount approved this claim →
9. Grant Balance Remaining (Line 3 minus Line 8)	\$ 0.00	

Lake & River Grants Only: Does project include State Lab of Hygiene Sample Analysis? Yes No

Certification

I certify that, to the best of my knowledge and belief, the eligible costs requested are in accordance with the terms of the grant agreement and that all expenditures are based on actual payments of record. This reimbursement represents the grant share due that has not been previously requested.

Name of Authorized Representative - type or print Joe Nehmer	(Area Code) Telephone Number (920) 674-7260
Signature of Authorized Representative 	(Area Code) FAX Number (920) 674-7585
Date Signed 06/25/2015	Email Address joen@jeffersoncountywi.gov

Space Below this Line for DNR Use Only	
Grant Specialist Signature	Reimbursement Approval Date

Business Unit	Description	Current Period Actual	Current Period Budget	YTD Actual	YTD Budget	Prorated Variance	Total Budget	Annual Remaining	Percentage Of Budget
1801 Parks	Revenue	(65,388.82)	(65,259.33)	(335,482.95)	(326,296.67)	(9,186.28)	(783,112.00)	(447,629.05)	42.84%
	Expenditures	66,347.13	77,246.67	292,082.71	386,233.33	(94,150.62)	926,960.00	634,877.29	31.51%
	Other Finances	-	-	-	-	-	-	-	#DIV/0!
Total		958.31	11,987.33	(43,400.24)	59,936.67	(103,336.91)	143,848.00	187,248.24	-30.17%
1806 Carol Liddle	Revenue	(8.96)	(6.67)	(38.86)	(33.33)	(5.53)	(80.00)	(41.14)	48.58%
	Expenditures	-	6,800.00	-	34,000.00	(34,000.00)	81,599.99	81,599.99	0.00%
	Other Finances	-	-	-	-	-	-	-	#DIV/0!
Total		(8.96)	6,793.33	(38.86)	33,966.66	(34,005.52)	81,519.99	81,558.85	-0.05%
1809 Carlin Weld	Revenue	(250.00)	(4.17)	(250.00)	(20.83)	(229.17)	(50.00)	200.00	500.00%
	Expenditures	-	298.48	-	1,492.41	(1,492.41)	3,581.78	3,581.78	0.00%
	Other Finances	-	-	-	-	-	-	-	#DIV/0!
Total		(250.00)	294.32	(250.00)	1,471.58	(1,721.58)	3,531.78	3,781.78	-7.08%
1811 Korth Park	Revenue	(179.00)	-	(179.00)	-	(179.00)	-	179.00	#DIV/0!
	Expenditures	-	-	-	-	-	-	-	#DIV/0!
	Other Finances	-	-	-	-	-	-	-	#DIV/0!
Total		(179.00)	-	(179.00)	-	(179.00)	-	179.00	#DIV/0!
1812 Carnes Park	Revenue	(421.00)	(1,938.00)	(9,754.34)	(9,690.00)	(64.34)	(23,256.00)	(13,501.66)	41.94%
	Expenditures	7,447.42	18,343.85	13,805.89	91,719.23	(77,913.34)	220,126.15	206,320.26	6.27%
	Other Finances	-	-	-	-	-	-	-	#DIV/0!
Total		7,026.42	16,405.85	4,051.55	82,029.23	(77,977.68)	196,870.15	192,818.60	2.06%
1813 Park Buildings	Revenue	(1,414.42)	(1,414.42)	(7,072.10)	(7,072.08)	(0.02)	(16,973.00)	(9,900.90)	41.67%
	Expenditures	1,635.19	1,414.42	7,036.69	7,072.08	(35.39)	16,973.00	9,936.31	41.46%
	Other Finances	-	-	-	-	-	-	-	#DIV/0!
Total		220.77	-	(35.41)	(0.00)	(35.41)	-	35.41	#DIV/0!
1814 Garman Nature	Revenue	-	-	-	-	-	-	-	#DIV/0!
	Expenditures	-	-	-	-	-	-	-	#DIV/0!
	Other Finances	-	41.67	-	208.33	(208.33)	500.00	500.00	0.00%
Total		-	41.67	-	208.33	(208.33)	500.00	500.00	0.00%
1816 Glacial Heritage	Revenue	-	-	-	-	-	-	-	#DIV/0!
	Expenditures	-	1,100.00	500.00	5,500.00	(5,000.00)	13,200.00	12,700.00	3.79%
	Other Finances	-	775.33	-	3,876.67	(3,876.67)	9,304.00	9,304.00	0.00%
Total		-	1,875.33	500.00	9,376.67	(8,876.67)	22,504.00	22,004.00	2.22%
1821 Snowmobile Trails	Revenue	-	(3,806.25)	-	(19,031.25)	19,031.25	(45,675.00)	(45,675.00)	0.00%
	Expenditures	-	3,806.25	-	19,031.25	(19,031.25)	45,675.00	45,675.00	0.00%
	Other Finances	-	-	-	-	-	-	-	#DIV/0!
Total		-	-	-	-	-	-	-	#DIV/0!
1824 Bike Trail	Revenue	(500.00)	(90.83)	(5,097.36)	(454.17)	(4,643.19)	(1,090.00)	4,007.36	467.65%
	Expenditures	1,489.00	216.58	1,489.00	1,082.92	406.08	2,599.00	1,110.00	57.29%
	Other Finances	-	55.53	-	277.65	(277.65)	666.37	666.37	0.00%
Total		989.00	181.28	(3,608.36)	906.40	(4,514.76)	2,175.37	5,783.73	-165.87%
1826 Dog Park	Revenue	(2,977.54)	(3,191.67)	(23,271.93)	(15,958.33)	(7,313.60)	(38,300.00)	(15,028.07)	60.76%
	Expenditures	1,794.18	6,358.17	7,916.21	31,790.83	(23,874.62)	76,298.00	68,381.79	10.38%
	Other Finances	-	476.03	-	2,380.14	(2,380.14)	5,712.34	5,712.34	0.00%
Total		(1,183.36)	3,642.53	(15,355.72)	18,212.64	(33,568.36)	43,710.34	59,066.06	-35.13%
1840 Groundskeeping	Revenue	(7,439.40)	(3,911.58)	(18,393.48)	(19,557.92)	1,164.44	(46,939.00)	(28,545.52)	39.19%
	Expenditures	7,478.52	3,911.58	18,432.61	19,557.92	(1,125.31)	46,939.00	28,506.39	39.27%
	Other Finances	-	-	-	-	-	-	-	#DIV/0!
Total		39.12	-	39.13	-	39.13	-	(39.13)	#DIV/0!
Total All Business Units	Revenue	(78,579.14)	(79,622.92)	(399,540.02)	(398,114.58)	(1,425.44)	(955,475.00)	(555,934.98)	41.82%
	Expenditures	86,191.44	119,495.99	341,263.11	597,479.97	(256,216.86)	1,433,951.92	1,092,688.81	23.80%
	Other Finances	-	1,348.56	-	6,742.80	(6,742.80)	16,182.71	16,182.71	0.00%
Grand Total Parks		7,612.30	41,221.64	(58,276.91)	206,108.18	(264,385.09)	494,659.63	552,936.54	-11.78%